



Boyce Equipment and Parts Co., Inc.

2893 South American Way

Ogden, Utah 84401

(801) 393-0007

Fax (801) 392-4746

Toll Free (800) 748-4269

TABLE OF CONTENTS

Introduction	2-3	2.5 Ton GMC Brakes	41
M Series 2.5 Ton Truck	4	5 Ton Front Axle (Non CTIS)	42-43
M35A2 Bobbed 2.5 Ton.	5	5 Ton Rear Axle	44
M35A3 2.5 Ton Truck	6	5 Ton Front Hub (Non CTIS)	45
M35A3 Bobbed Deuce	7	5 Ton Rear Hub (Non CTIS)	46
M Series 5 Ton 6X6	8	5 Ton Front Axle CTIS	47-48
800 Series 5 Ton Trucks	9	5 Ton Front Hub Breakdown CTIS	49
900 Series 5 Ton Trucks	10	5 Ton Rear Hub Breakdown CTIS	50
M1008 1 1/4 Ton GM Pickup Truck	11	5 Ton Brakes (M54, 800 Series)	51
M Series Vehicles	12	5 Ton 900 Series Brakes	52-53
Engines	13	5 Ton Differential Assy	54
Fiberglass Tops, Front Clips, Cargo Covers	14	5 Ton Differential	55
Custom Wheels & Tires	15	Order Information	56
Axles	16		
1 Ton, Rockwell 2.5 Ton Axles	17		
Rockwell 2.5 Ton Axles	18-19		
Rockwell 5 Ton And Planetary Axles	20		
Hydraulic Steering Components	21		
Hydraulic/Mechanical Steering Kits	22		
Transfer Cases	23		
Parts	24-26		
Model 60 Front Axle (GMC/Chev/Ford/Dodge)	27		
General Motors 10.5" 14 bolt Corporate Full Float	28		
2.5 Ton Front Axle Breakdown (Non CTIS)	29-30		
2.5 Ton Rockwell Front Steering (Non CTIS)	31-32		
2.5 Ton Rear Axle Breakdown (Non CTIS)	33		
2.5 Ton Brakes	34		
2.5 Ton Differential Assy	35-36		
2.5 Ton Differential Pinion	37		
2.5 Ton Front Hub Breakdown CTIS	37		
2.5 Ton Rear Hub Breakdown CTIS	38		
2.5 Ton GMC Front Axle	39		
2.5 Ton GMC Rear Axle	39		
2.5 Ton GMC Differential	40		
2.5 Ton GMC Hub & Drum Assy	40		

BOYCE

Boyce Equipment is a family run business celebrating over 50 years. We are dealers in the field of military trucks, truck parts and equipment. We carry vehicles ranging from the 1 1/4 ton Dodge, G.M., 4X4's and 2.5 ton REO'S through the GMC 6X6's, Kaiser and A.M. General 5 ton.

We offer original equipment powertrains and specialize in heavy duty conversions using Dana 44's, 60's, 70's and Rockwell 2.5 ton through planetaries. We feature a complete shop, located in Ogden, Utah (801) 393-0007, 1-800-748-4269 and offer service and rebuilding on all our equipment. Our customer's range all over the world in many different fields, from farming, construction, recreational vehicles, monster trucks, and mining equipment. We also deal with heavy-duty civilian equipment including rock-crawlers, winches, and truck tires.

Since we have such a turnover in volume of parts and equipment, we can offer lower prices than perhaps anyone in North America. We hope that we can serve you in the very near future. Wherever you are, we want you to feel that we're just a phone call away. If you have any questions, please feel free to call or write us. I personally want to thank you all for making Boyce Equipment the company it is today and the company it will be for years to come.

Sincerely,



Mark Boyce
President, Boyce Equipment & Parts Co., Inc.





MILITARY 6 WHEEL DRIVE TRUCKS

THE PROVEN DURABILITY & RUGGEDNESS OF THE ALL WHEEL DRIVE MILITARY TRUCK HAS BECOME A VALUABLE TOOL IN THE INDUSTRY TODAY

These late "M" series trucks, with 4 and 6 wheel drive, are military trucks which we offer for sale at a fraction of new truck cost. Trucks are reconditioned in our modern shop under the most exacting standards and controls to give like new truck performance.

Boyce Equipment and Parts Co. is one of the largest re-builders of surplus military vehicles. We have built a reputation for quality in this specialized field over a period of more than 50 years. Our "M" series trucks cannot be surpassed on jobs where maximum traction and power are required.

Boyce complete shop facilities are available for installing options, custom bodies, front and rear winches, "A" frames, hoists, fifth wheels and all other types of truck equipment. We carry a complete stock of replacement parts and optional accessories to insure that we can tailor any "M" Series truck to meet your exact needs. Hundreds satisfied customers in contracting, logging, drilling, farming and other trades are proof of our commitment to supply maximum value for your dollar.

**DUMP TRUCKS,
TRACTORS,
WATER TRUCKS,
WRECKERS,
CARGO &
FLATBED TRUCKS.
OVER A HUNDRED
MILITARY
VEHICLES
IN STOCK.
NEW STOCK
REGULARLY.**



2.5 TON 6X6



800 SERIES 5 TON



900 SERIES 5 TON



M SERIES 2.5 TON TRUCK

G-742 - M35A1 - M35A2 - M109 - M50

**DUMP TRUCKS, TRACTORS, WATER TRUCKS, WRECKERS, CARGO & FLATBED TRUCKS.
OVER A HUNDRED MILITARY VEHICLES IN STOCK. NEW STOCK REGULARLY.**



Specs

- Gas (OA-331 MFG Reo) 127 HP @ 3200 RPM
- Diesel (LD 465 - LTD 465) MFG White Continental 180 HP @ 2600 RPM
- 3053-A 5 Speed Overdrive Transmission
- T-136 Rockwell 2 Speed Transfer
- FC-240 Rockwell Double Reduction Axle 6.72 Ratio
- Air-Over-Hydraulic Brakes
- 24 Volt Electrical System
- 9.00 X 20 Military Tires
- GVW 23,380
- Net Weight 13,000 Lbs.

Options

- Fiberglass Cab Enclosure
- 24V Heater (Water Type)
- 12,000 Lb PTO Winch
- 24 Volt to 12 Volt Conversion
- T-136-27 Air Shift Transfer Case
- West Coast Mirrors
- Paint available to Spec.
- Frames Lengthened to Spec.
- Air Shift Front Axle
- Turbo Charged Engine
- Recovered Seats

Truck Model	Net Weight	Gross Weight	Max Towed Load	Length	Width	Height	Wheelbase	Tire Size	Max Speed	Fuel Capy
Cargo Truck (M35A2)	13,000 LBS	23,800 LBS	10,000 LBS	262	96	112	112	9X20 11X20	58 MPH	50 GAL
Tanker Truck (M49, M50)	14,000 LBS	24,100 LBS	10,000 LBS	263	96	97	97	9X20	58 MPH	50 GAL
Van Truck (M109)	15,880 LBS	25,500 LBS	10,000 LBS	263	96	130	130	9X20	58 MPH	50 GAL



M35A2 BOBBED 2.5 TON



Specs

- New Fiberglass Top (Removable)
- Recovered Seats (Driver Seat Spring Ride)
- Electrical- Checked out completely
- LDT 465 Turbo Charged Engine, Low Mileage, Checked out and Serviced
- 5 Speed Overdrive Transmission- Serviced
- Air Shift Front Engage Transfer Case- Serviced
- Air Over Hydraulic Brakes- Serviced
- 4 New Custom 20X11 Wheels (Not Surplus)
- 4 High Tread 14.00R20 Goodyear/Michelin Tires or 395/85R20 Michelin Tires
- Cooling System Serviced w/ New Hoses and Belts
- Military Shortened Bed Installed
- Fresh Industrial Paint (1 Color)
- Fully Serviced
- Good Clear Window Glass
- Operating Windshield Wipers
- 2 New Group 34 Batteries
- West Coast Mirrors
- Shortened or Lengthened to Customer Specs
- M105 Trailer Bed (Installed)

Options

- Fiberglass Top DOT Lighting
- Sliding Rear Window
- Bucket Seat Spring Ride Passenger
- DOT Lighting on Bed
- Camo Painting
- Hydraulic Power Steering
- Air Conditioning (12V/24V)
- 12 Volt Conversion
- 24/12 V 60 Amp Solid State Reducer
- Winch Installed (PTO Driven)
- PTO Installed w/ PTO Shaft to Rear
- Rear Trailer Hitch Installed
- Spare Tire and Custom Wheel
- Spare Tire and Stock GI Wheel
- Detroit Locker Installed (Per Axle)
- ARB Air Locker Installed (Per Axle)
- Lock Out Hubs Installed
- Custom Cargo Bed Lengths
- 12,000 LB. Electric Mile Marker Winch
- Dump Bed (Installed)

BOYCE EQUIPMENT OFFERS A CUSTOM BUILT BOBBED DEUCE THAT IS READY TO WORK OR PLAY. WE TAKE A STANDARD 2.5 TON 6X6, REMOVE COMPLETE REAR AXLE AND SUSPENSION, AND INSTALL SINGLE LEAF SPRING SUSPENSION. MAKING IT A 4X4. OUR TRUCKS ARE SERVICED IN A MODERN FACILITY AND WE OFFER MANY CUSTOMIZED OPTIONS. TIRES, TOPS, LONG FRAMES, SHORT FRAMES, WE ALWAYS COMPLETE IT THE WAY YOU WANT IT. BOYCE EQUIPMENT HAS BEEN SELLING MILITARY TRUCKS AND PARTS FOR OVER 50 YEARS AND WE KNOW HOW TO GET IT DONE.

BOYCE

M35A3 2.5 TON TRUCK



Specs

- Cat 3116 Diesel Engine
- 4 speed Allison Automatic Transmission
- Power Steering
- 24 V Heater
- Air shift front axle
- Central Tire Inflation
- Michelin 14.5R20 XL Tires
- Spring Suspension
- 50 Gallon Fuel Tank
- GVW 23,380 lbs.

Options

- Fiberglass Cab Enclosure
- Hydraulic Winch
- 24 Volt to 12 Volt Conversion
- Paint available to spec
- Frames lengthened to spec
- Tires & Wheels
- Recovered Seats
- Fiberglass Hood

CALL FOR AVAILABILITY AND PRICE



M35A3 BOBBED DEUCE



Specs

- New Fiberglass Top (Removable)
- Recovered Seats (Driver Seat Spring Ride)
- Electrical- Checked out completely
- Cat 3116 Diesel Engine, Low Mileage, Checked out and Serviced
- Air-O-Matic Power Assist Steering
- 4 Speed Allison Automatic Transmission- Serviced
- Air Shift Front Engage Transfer Case- Serviced
- Air Over Hydraulic Brakes- Serviced
- Central Tire Inflation System
- 4 High Tread 14.00R20 Goodyear/Michelin Tires
- Cooling System Serviced w/ New Hoses and Belts
- Military Trailer Bed Installed
- Fresh Industrial Paint (1 Color)
- Fully Serviced
- Good Clear Window Glass
- Operating Windshield Wipers
- 2 New Group 34 Batteries
- West Coast Mirrors
- Shortened or Lengthened to Customer Specs
- M105 Trailer Bed (Installed)

Options

- Fiberglass Top DOT Lighting
- Sliding Rear Window
- Bucket Seat Spring Ride Passenger
- DOT Lighting on Bed
- Camo Painting
- Air Conditioning (12V-24V)
(*Requires Passenger Bucket Seat*)
- 12 Volt Conversion
- 24/12 V 60 Amp Solid State Reducer
- Winch Installed (Hydraulic Driven)
- PTO Installed w/ PTO Shaft to Rear
- Rear Trailer Hitch Installed
- Spare Tire and Custom Wheel
- Spare Tire and Stock GI Wheel
- Detroit Locker Installed (Per Axle)
- ARB Air Locker Installed (Per Axle)
- Lock Out Hubs Installed
- M105 Trailer Bed (Installed)
- Custom Cargo Bed Length

BOYCE EQUIPMENT OFFERS A CUSTOM BUILT BOBBED DEUCE THAT IS READY TO WORK OR PLAY. OUR TRUCKS ARE SERVICED IN A MODERN FACILITY AND WE OFFER MANY CUSTOMIZED OPTIONS. TIRES, TOPS, LONG FRAMES, SHORT FRAMES, WE ALWAYS COMPLETE IT THE WAY YOU WANT IT. BOYCE EQUIPMENT HAS BEEN SELLING MILITARY TRUCKS AND PARTS FOR OVER 50 YEARS AND WE KNOW HOW TO GET IT DONE.



M SERIES 5 TON 6X6

G-744 - M54 - M51 - M52 - M62



Specs

- Engine (Gas R6602 Continental) 225 H.P.
- Diesel (ENDT-673 Mack) 220 H.P.
(LDS-465 White) 180 H.P.
- 5 Speed Direct or Overdrive Transmission
- Power Steering
- 2 Speed Transfer Case
- 1100 X 20 Military Tires
- 24 V Electrical System
- GVW 40,000
- Net Weight 20,000

Options

- Fiberglass Cab Enclosure
- 24 V Heater
- 20,000 Lb. PTO Winch
- 24 Volt to 12 Volt Conversion
- West Coast Mirrors
- Frames Lengthened to spec
- Paint available to spec
- Recovered Seats

Truck Model	Net Weight	Gross Weight	Max Tow Load	Length	Width	Height	Wheelbase	Tire Size	Max Speed	Fuel Capy
Cargo Truck (M54)	19,945 LBS	39,945 LBS	15,000 LBS	298.75	97	116	179	11X20	52 MPH	78 GAL
Dump Truck (M51)	22,663 LBS	42,663 LBS	15,000 LBS	266.12	97.25	110.63	167	11X20	52 MPH	110 GAL
Tractor (M52)	18,966 LBS	43,966 LBS	30,000 LBS	257.5	97	103.16	167	11X20	52 MPH	110 GAL
Wrecker (M62)	33,325 LBS	48,830 LBS	20,000 LBS	348	97	127.16	179	11X20	52 MPH	78 GAL

100% REPLACEMENT PARTS IN STOCK



800 SERIES 5 TON TRUCKS

G-908 - M813 - M816 - M817 - M818



Specs

- Engine (NHC-250 Cummins) 250 H.P.
- 5 Speed Transmission
- Power Steering
- 2 Speed Transfer Case
- 11.00 X 20 Military Tires (Optional Singles)
- 24 V Electrical System
- GVW 44,000
- Net Weight 21,000

Options

- Fiberglass Cab Enclosure
- 24 V Heater
- 20,000 Lb. PTO Winch
- 24 Volt to 12 Volt Conversion
- West Coast Mirrors
- Frames Lengthened to spec.
- Paint available to spec.
- Tires & Wheels
- Recovered Seats

Truck Model	Net Weight	Gross Weight	Max Tow Load	Length	Width	Height	Tire Size	Max Speed	Fuel Capy
Cargo Truck (M813)	21,020 LBS	31,020 LBS	15,000 LBS	319	97.75	117	11X20	52 MPH	78 GAL
Dump Truck (M817)	23,755 LBS	33,755 LBS	15,000 LBS	289	97.75	112	11X20	52 MPH	110 GAL
Tractor (M818)	20,165 LBS	35,165 LBS	37,500 LBS	280	97.75	112	11X20	52 MPH	110 GAL
Wrecker (M816)	35,050 LBS	42,050 LBS	20,000 LBS	356	97.75	112	11X20	52 MPH	133 GAL

100% REPLACEMENT PARTS IN STOCK

BOYCE

900 SERIES 5 TON TRUCKS

M923 - M927 - M929 - M931 - M936

CARGO - DUMP - TRACTOR - WRECKER



Specs

- Engine (NHC-250 Cummins) 250 H.P.
(6CTA8.3 Turbo Cummins)
- Allison Automatic Transmission
- Power Steering
- Air Shift Transfer Case
- Heater
- Air Shift Front Axle
- Air Brakes
- 11.00R20 Military Tires Dual Rear
- 14.00R20 Military Tires Single Rear
- 24 V Electrical System
- GVW 44,000
- Net Weight 21,000

Options

- Fiberglass Cab Enclosure
- Hydraulic Winch
- 24 Volt to 12 Volt Conversion
- Paint available to spec
- Frames lengthened to spec
- Tires & Wheels
- Recovered Seats
- Poly Tank (Installed)
- A/C

CALL FOR AVAILABILITY AND PRICE

BOYCE

M 1008 1 1/4 TON GM PICKUP TRUCK

GUCV SERIES M1008



Specs

- 6.2 Liter Diesel Engine
- Turbo 400 Transmission
- NP 208 Transfer Case
- Dana 60 Front Axle w/ 456 Gears
- HD GM 14 Bolt Rear Axle w/
- Detroit Locker

Options

- Custom Lift (2-6")
- Hitches
- Paint available to spec.
- Tires & Wheels
- Recovered Seats

CALL FOR AVAILABILITY AND PRICE

BOYCE

**WE STOCK AND SUPPLY PARTS FOR ALL TYPES OF
"M" SERIES VEHICLES**



3/4 TON DODGE M-37



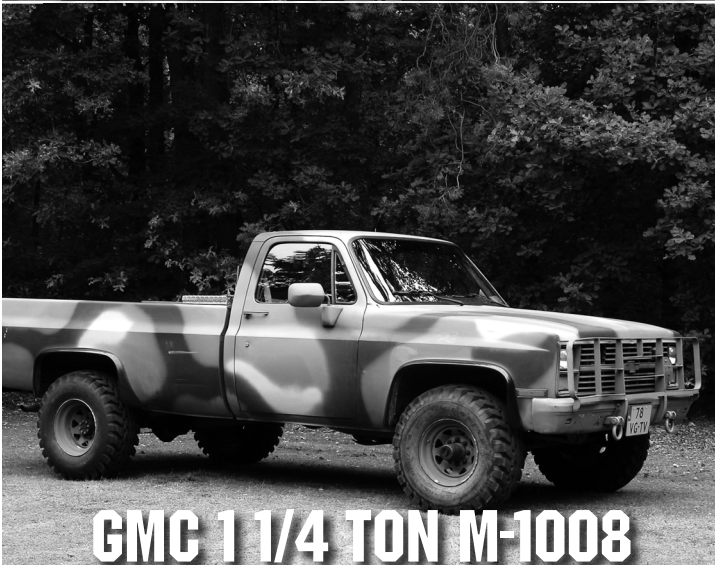
1 1/4 TON M-715 KAISER JEEP



GMC 2.5 TON M-135, M-211



2.5 TON M-35



GMC 1 1/4 TON M-1008

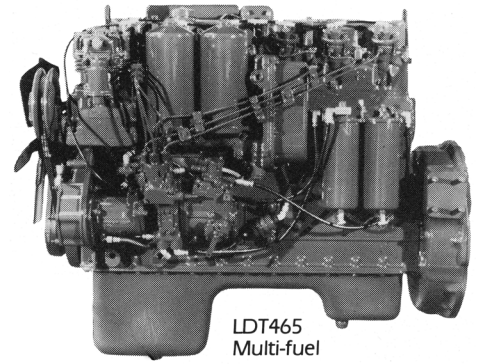
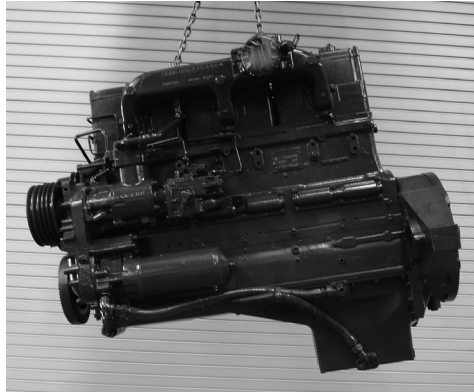


900 SERIES 5 TON

BOYCE

ENGINES

**CUMMINS, CONTINENTAL, HERCULES, MACK, DODGE, GM 6.2, REO, WHITE, DETROIT. ENGINES IN STOCK.
GOOD USED AND REBUILT.**



LDT465
Multi-fuel

GM 6.2

NHC 250 CUMMINS ENGINE

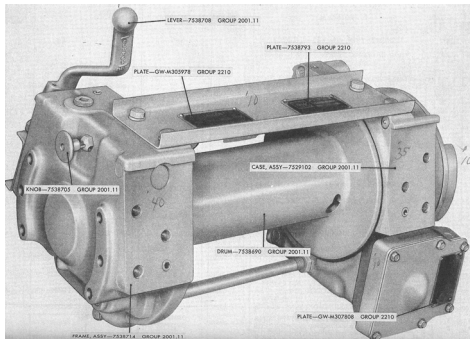
LDT465 MULTI-FUEL

MULTI-FUEL GOVERNMENT DESIGN ENGINES

ENGINE MODEL	NUMBER CYLINDERS BORE AND STROKE	PISTON DISPLACEMENT (CU. IN.)	MAX. BRAKE H.P. (WITH BARE ENGINE AT SPECIFIED RPM)	PEAK TORQUE (IN FT.LBS. AT SPECIFIED RPM)	COMPRESSION RATIO	LENGTH - IN INCHES (FAN TO FLYWHEEL)	HEIGHT - IN INCHES (BOTTOM OF OIL PAN TO TOP OF COVER)	WIDTH IN INCHES	DRY WEIGHT
LD465	6 - 4.56 x 4.88	478	135@2600	320@1400	22:1	48.04	41.20	29.68	1614
LDT465	6 - 4.56 x 4.88	478	140@2600	325@1400	22:1	48.04	41.20	30.18	1650
LDS465	6 - 4.56 x 4.88	478	180@2600	450@1400	22:1	48.28	40.32	32.88	1650

WINCHES

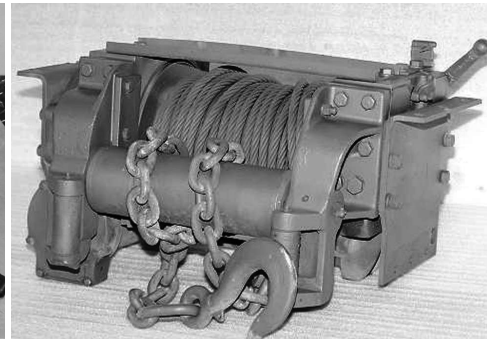
12,000 LB Garwood



Mile Marker Winch



20,000 LB Garwood

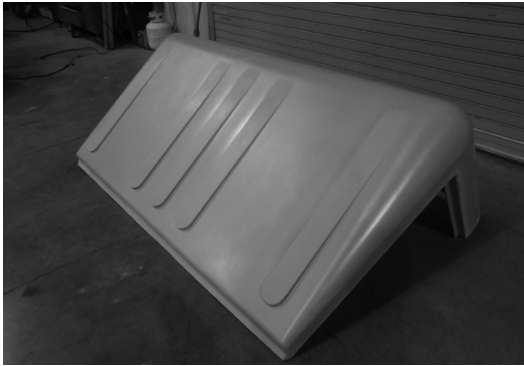


We stock P.T.O. winches starting at 6000 lbs all the way up to 60,000 lbs. Front mounted, we usually have what you need. Our 20,000 lbs Garwood, is ideal installing in the rear of trucks with its 34 in. width. It too can be bolted to a stock frame. Length-30 in. Weight-220 lbs. Our 12,000 lb Garwood winch is the most popular since it can be mounted between most stock truck frames (34 in.) Bolts from outside of the frame. Weight-156 lbs. We also stock hydraulic winches for the 900 Series 5 Ton 6 x 6.



FIBERGLASS TOPS/FRONT CLIPS/CARGO COVERS

We Offer New Fiberglass Tops For 2.5 Ton Truck, 5 Ton Truck, M-37 Dodge, And M-715 Kaiser Jeeps. New To Our Line Is Our 900 Series 5 Ton Tops And Front Clips. Call For Prices. We Also Carry New And Used Cargo Covers For The 2.5 Ton And 5 Ton 6X6.



Comes with all hardware to install, ships easily. Call for Quote.



CUSTOM WHEELS & TIRES

We Have Them! 15" to 25" wheels! We can custom build you ANY size wheel for your needs. Call with your specs and we can quote you the wheel for you application. We stock military tires of ALL sizes, ranging from 37X12.5X16.5 Hummer Tire, 9.00X20, 11.00X20, 11.00R20, 395/85R20, 14.00R20, 14.5R20, 16.00R20, etc.



BOYCE

AXLES

We offer original equipment powertrains, and specialize in heavy duty conversions using dana 44's, 60's, 70's, G.M. Corporate axles. For super heavy duty axles we offer Rockwell 2.5 Ton, Rockwell 5 Ton, and planetaries, call for a quote on any application.

All our axles are first disassembled to the bare housing, then completely cleaned and checked for wear. Any part showing undue wear is replaced.

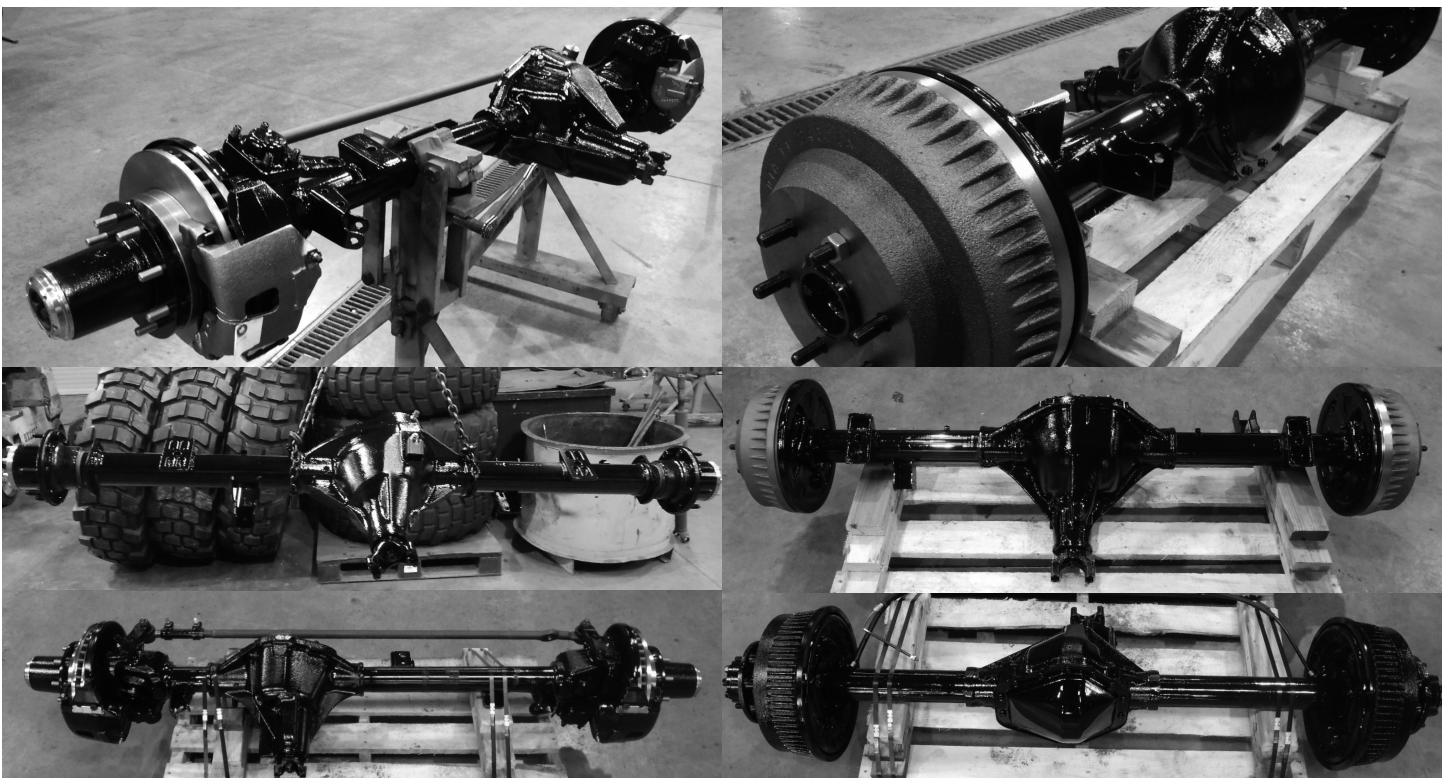
Our axles are then reassembled with new seals/bearings, knuckle boots, brake pads and wheel cylinders.

At the time of reassembly, your axle can be built with gear changes (limited slip-locking-differentials) custom disc brakes, spring pads/moved, housing modifications with little or no labor charge at the time of purchase. Also many used and government rebuilt axles in stock.

Also, all our axles are painted primer or black, then packed and shipped. We take pride in sending you a 100% Guaranteed rebuilt axle.

We have been praised by many who have purchased our axles and other equipment. They have expressed great satisfaction in our quality and workmanship, and quite frankly, we love the compliments and intend to earn more.

All other rebuilt parts go through the same process and demand our utmost attention.



DANA 44'S, 60'S, 70'S, GM CORP 14-BOLT

BOYCE

1 TON, ROCKWELL 2.5 TON AXLES



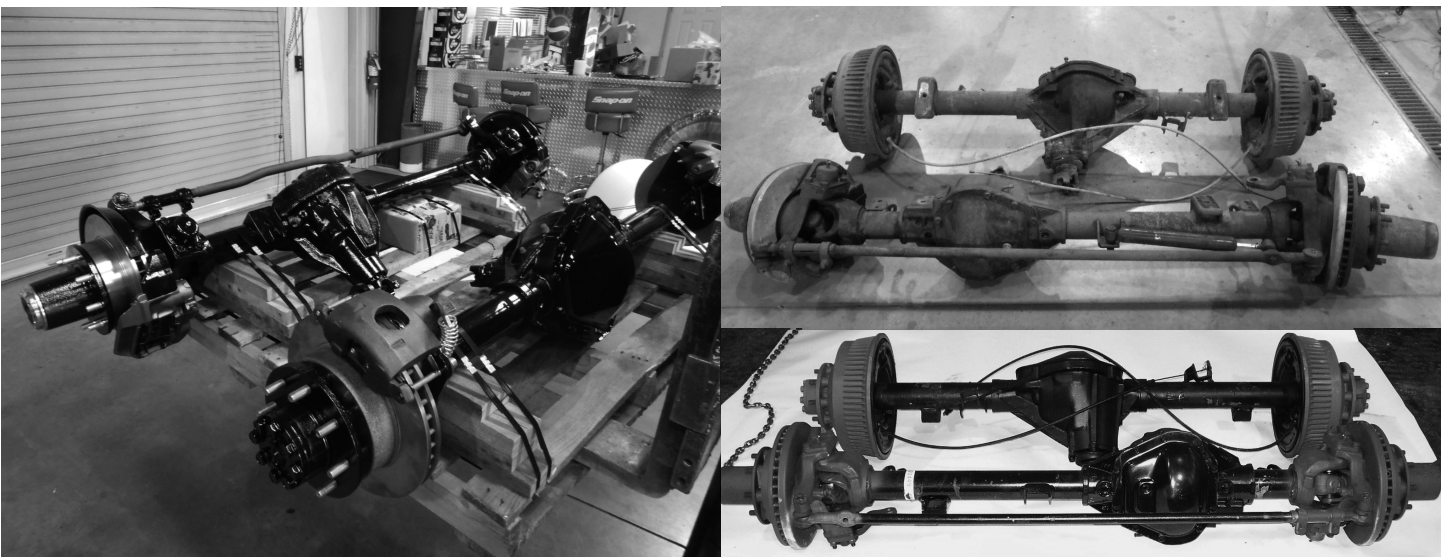
AXLES TO SEPARATE THE MEN FROM THE BOYS

Are you tired of breaking your stock 1/2 to 3/4 ton axles. Then step up to 1 ton or 2.5 ton axles.

We feature our Dana 60 front axle, with Corporate 14 bolt rear to make your truck capable of running oversize tires, plus high horse-power performance engines, without the frustrating and costly breakdowns, when you count on your truck the most.

Boyce offers U-Bolts, Spring Plates (sway bar mounts), Lock-out Hubs, Spring Pads moved to your specs. Gear changes from 2.73-5:13 ratio, any type of lockers or limited slips available.

When converting your truck please call with your make, model and spring pad measurement (center to center of springs), so we can help you take the guess work out of your project.



BOYCE

ROCKWELL 2.5 TON AXLES

FOR THE ULTIMATE IN COMPETITION AND SHOW TRUCK AXLES. USED FOR ROCK CRAWLING, MUD BOGGING, FARMING, AND INDUSTRIAL.



- These top loader axles are excellent for eliminating severe driveline angles when used with high lift suspensions for 40 inch and taller tires. (These axles are only available in 6:72 Ratio.)
- They are great for rear steering applications.
- Detroit Lockers, Disc Brakes, Rear Steering Rams and Mounts can be installed at time of purchase. Kits available with axles, wheels, suspensions and installation hardware.



MDL-250 Detroit Lockers No Spin Differential

For traction when it counts, Boyce is proud to be a rep for Detroit Lockers. We have these available for both 2.5 ton and 5 ton applications.

Detroit Locker is the automatic positive locking differential that has offered the operators of high-performance cars, trucks and off-road construction vehicles the maximum possible traction for many years. It prevents spin-outs by powering both wheels even when one leaves the ground.



14 Bolt Disc Brake

Can be purchased separately or installed. Eliminates brake drums and backing plates and lightens axle for competition use. Easily installed using stock brake system. The kit can be purchased with standard calipers or with park brake calipers. Kit includes all mounting hardware.



Disc Brake Kit - (MBD-250/2.5 Ton) (MBD-500/5 Ton)

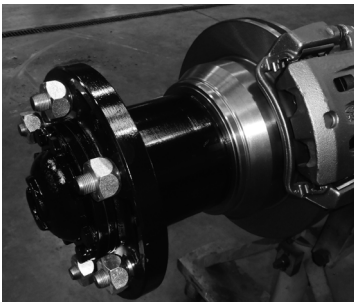
Can be purchased separately or installed. Eliminates brake drums and backing plates and lightens axle for competition use. Easily installed using stock brake system. Kit includes all mounting hardware to be installed in minutes.



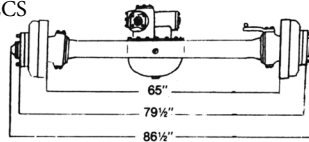
Boyce 2.5 Ton Front Hub Mount Disc Brake Kit

Complete Kit Includes:

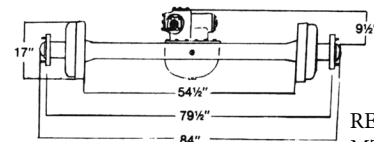
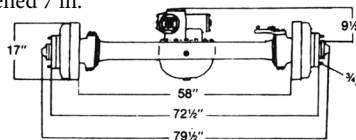
- Rotor - Caliper - Adapter - Hardware, Bolt On Per Axle
- Boyce Part #: DBHMF250



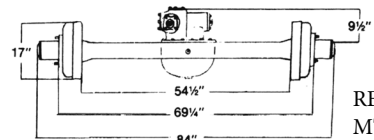
FRONT AXLE SPECS
MTF-250 Original



FRONT AXLE SPECS
MTF-250 Shortened 7 in.



REAR AXLE SPECS
MTF-250 Standard



REAR AXLE SPECS
MTF-250 Short Hub

Boyce 2.5 Ton Rear Hub Mount Disc Brake Kit

Complete Kit Includes:

- Rotor - Caliper - Hardware, Bolt On Per Axle
- Boyce Part #: DBHMR250



5 TON AND PLANETARY AXLES

MTF-500 5 Ton Front Axle

MTR-500 5 Ton Rear Axle

Our 5 Ton military axles (MTF-500) are used for the all-out enthusiast who isn't satisfied with just a big truck. These axles are sold to those of you who would like to run a tire bigger than 60 inches. Monster trucks, mud boggers, and tractor pullers have used these axles. If you're building a street legal truck, these are probably out of the question due to the size and weight.

At Boyce, we offer complete suspension conversion kits (MTK-500), Detroit Lockers, etc. We also put together complete monster truck packages including tires, wheels, frames, transfer case, steering, etc.

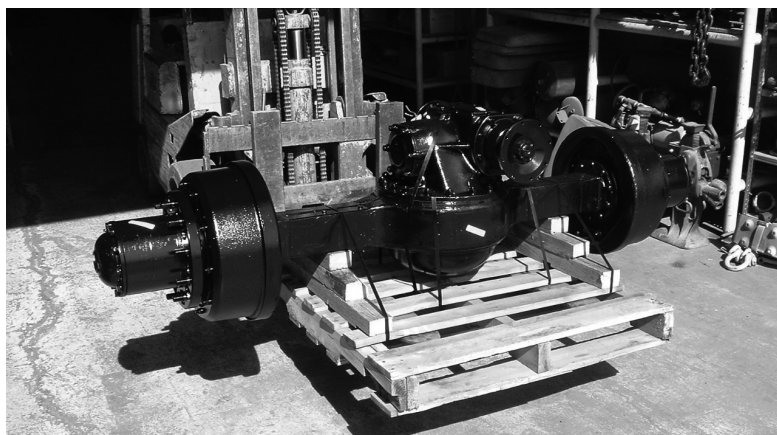
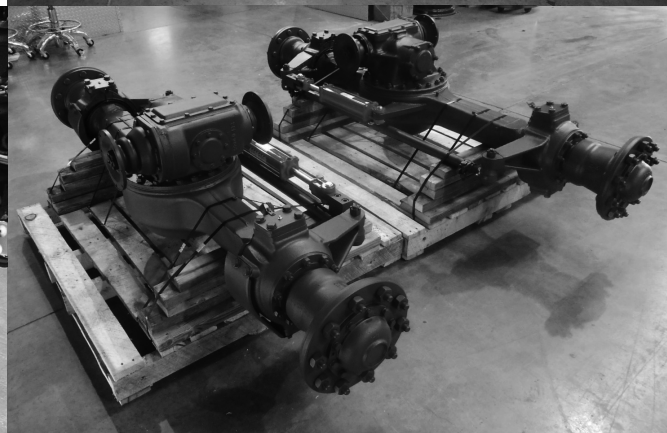
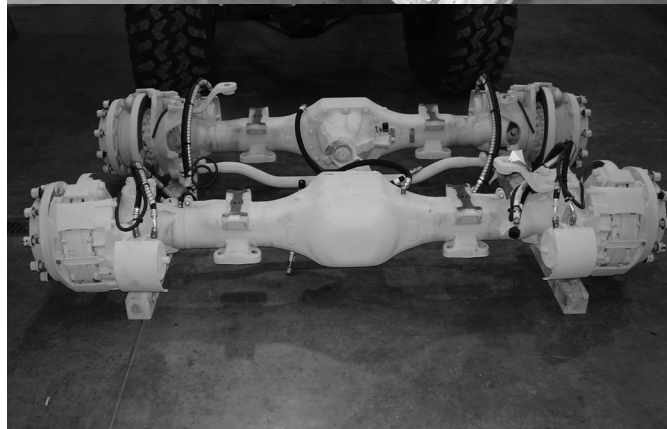
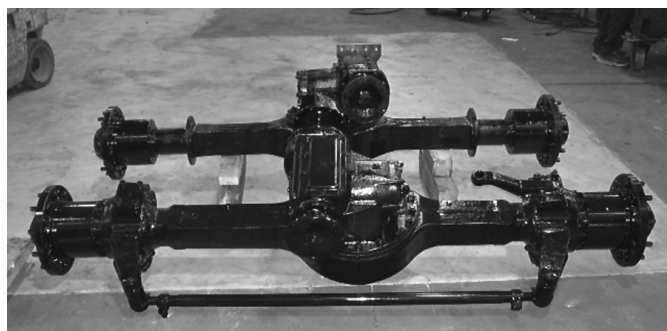
These axles come with a stock 6.44 gear ratio and a stout 2 inch axle shaft. They keep getting more popular with all types of applications.

Planetaries

Rockwell – Axle Tech

We stock a lot of different types of low-reduction axles.

Give us a shout, we probably have what you need!





HYDRAULIC STEERING COMPONENTS

Front Steering

The Char-Lynn steering control unit is fully fluid linked. This means there is no mechanical connection between the steering unit, the pump and the steering cylinders. The unit consists of a manually operated direction control valve and servo feedback meter element in a single body. It is used principally for fluid linked power steering systems, but it can be used for some servo-type application where visual positioning is required. The close-coupled rotary action valve performs small number of moving parts.

Char-Lynn hydraulic steering units work ideally with all military axles. They are installed either to the frame or the firewall. You cut the steering shaft off about 14" past the firewall, and then attach the Char-Lynn to the shaft. Instructions are included.

Rear Steering

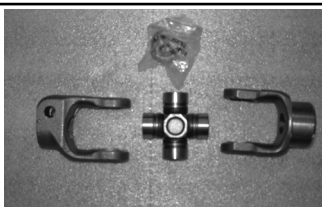
24/12 volt electric/hydraulic remote control power pack equipped with control for operating cylinders. The high volume of the pump makes it ideal for use with most cylinders. Closed loop type system returns fluid directly to the input side of the pump when returning from the cylinder. This provides added safety as the cylinder will not retract as fast as it extends. This power pack can be used to power tail gates, hydraulic hoists and attaches to truck and farm machinery.

12 volt, single terminal motor. A #4 (.333") gear face 13T spline drive pump. 1/4 NPTF ports. Adjustable relief valve at 2500 psi. A 3-position, 4-way, solenoid operated valve with a pilot check valve. A 3 quart reservoir for horizontal mounting.



Steering Valve (FSV)

The steering motors are standard 4 bolt square mount on a 3/4" circle, have an internal spline, O-ring ports, 2500 psi., 300 psi, back pressure, are open center and weight 8 lbs.



Column Kit (FSV-10)

Char-Lynn Stub to Column Kit.

- Consists of:
- 1 Spline yoke
 - 1 3/4 Keyway yoke
 - 1 U-joint



Rear Steering Pump RPP



Hydraulic Steering Cylinder (FSR 250)

Boyce steering cylinders provide long life and reliable operation due to design features and quality workmanship. Features:

- 2500 psi working pressure (4000 psi max. shock)
- Precision honed cylinder barrels for long seal life
- Hardened chrome plated rods resist damage and rust
- Rod wipers clean dirt from rod to give long seal life
- Clevis mounting with 1" pin holes on 2" bore sizes: 1 1/4" pin holes on 5" bore
- Ports in line with pins



Hydraulic Steering Cylinder Mount (HSCM)

Our latest steering cylinder mounts are pre-fitted to take the guesswork out of installing the FS series cylinders. These mounts have replaceable oil impregnated bushings for long lasting wear.

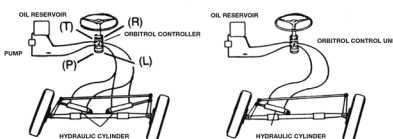
Installed with no labor charge with axle purchase.



Cushion Valves (FCV)

Used to stop or minimize shock, surge and overloads. Mounts between control valve and cylinder or motor. May be used to regulate pressure on one cylinder of a circuit without disturbing any other. Bypass oil is sent to the opposite side to prevent cavitation.

- (T) = Tank**
- (P) = Pump**
- (R) = Right**
- (L) = Left**



Our Char-Lyn steering valves are engineered to match your hydraulic steering requirements.



HYDRAULIC/ MECHANICAL STEERING KITS

M35 2.5 Ton Power Steering



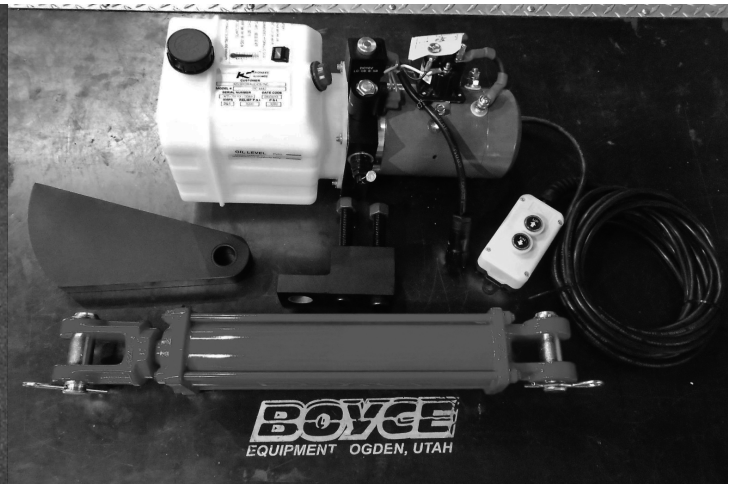
- 1 Steering Gear
- 1 Pitman Arm
- 1 2 Pc. Steering Column
- 1 Reinforcement Plate
- 1 Smaller Steering Wheel
- 1 Mounting Bracket
- 1 Power Steering Pump
- Power Steering Belts
- 1 Power Steering Pump Brackets
- Horn Contact
- 1 Steering Column Support Bracket
- Bolts, Zip Ties, etc.
- 1 Hydraulic Hoses
- 1 Drag Link

**Comes w/ Installation Instructions*



2.5 Ton & 5 Ton Front Hydraulic Steering

- Charlyn Steering Valve (Boyce Part #: FSV)
- Steering Column (Boyce Part #: FSV-C1)
- Check Valve Lock (Boyce Part #: FCV)
- 2 Way Front Steering Ram (Boyce Part #: FSR250)
- Column Kit Coupling (Boyce Part #: FSV10)
- Steering Ram Mounts (Boyce Part #: HSCM)
- Charlyn Bracket (Boyce Part #: FSV-B)



2.5 Ton & 5 Ton Rear Steering Kit

- 12 V. Power Pak Hydraulic Motor (Boyce Part #: RPP)
- 24 V. Power Pak Hydraulic Motor (Boyce Part #: RPP)
- 2 Way Front Steering Ram (Boyce Part #: FSR250)
- Steering Ram Mounts (Boyce Part #: HSCM)

BOYCE

TRANSFER CASES

Remember Boyce carries a full stock of transfer case replacement parts!

Transfer Cases Come Rebuilt Or Good Use Takeout



NP 200



NP 205

SM465 TH350 TH400



DIVORCED 205



NP 208

Turbo700R Turbo400

Rebuilt All Transfer Cases Come With a 1-Year Warranty

NEW PROCESS, 200, 203, 205, 208



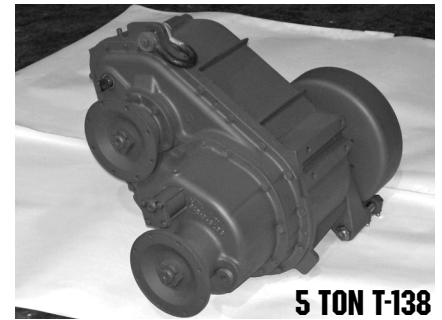
2.5 TON T-136

ROCKWELL T-136, T-136-27, T-1138, T-138, T-223, T-226

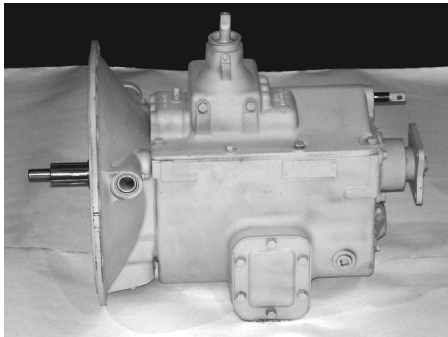
Custom or Stock, Call us with your specs and application.

2.5 – 5 Ton

TC-250 air shift front drive is also available

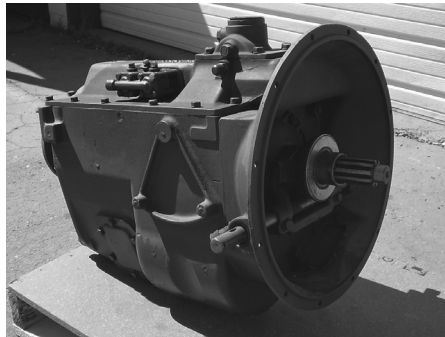


5 TON T-138



3052-3053A

2.5 TON APPLICATIONS



6453, 6352

5 TON APPLICATIONS

MILITARY TRANSMISSIONS

Fully synchroed and will hold up to large horsepower gas and diesel engines. Replacement parts always in stock. We offer good use takeout and rebuilt transmissions for 1 Ton, 2.5 Ton, and 5 Ton Military trucks.

Make: Spicer

Model: 3053A

Gear Ratios:

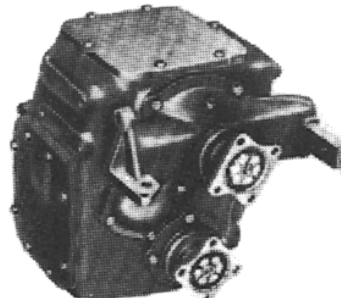
Reverse	5.90:1	Third	1.89:1
First	6.00:1	Fourth	1.00:1
Second	3.31:1	Fifth	0.85:1

GMC, M211, M135, G749, G506, G508 GMC 2.5 TON TRANSFER CASE

Model: G-749 – G-508

Mfg: GMC

This unit is best used with GMC style axle with reverse rotation.



GMC-2.5 TON TRANSFER CASE



G508

The 3053A Spicer Transmission fits almost all Diesel applications. Call for information.

BOYCE

PARTS



2.5 Ton 6x6 to 4x4 Bobber Kit

Making your 6x6 into a 4x4

MTK 250 Suspension Kit (1 Axle Only)

Kit Consists of:

- 2 2.5 Ton Springs
- 4 Spring Brackets
- 2 Shackles
- 6 Spring Pins
- 2 Spring Seats
- 2 Top Plates

*Shocks included, but not pictured.

L-SHAPED BRACKETS ARE EXCELLENT FOR USE WITH CUSTOM C-CHANNEL AND RECTANGULAR TUBE FRAMES. (CUSTOM RE-ARCH AVAILABLE)

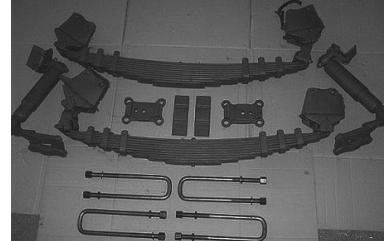
5 Ton 6x6 to 4x4 Bobber Kit

Making your 6x6 into a 4x4

MTK 500 Suspension Kit (1 Axle Only)

Kit Consists of:

- 2 5 Ton Springs
- 2 Clamp Kits
- 4 Spring to Frame Mounts
- 4 U-Bolts
- 2 Shocks



Boyce Part #: MFA250BS



Boyce Part #: MFA250BL

Rockwell 2.5 Ton Front U-Joint Axle Shafts

We carry the stock Rockwell 2.5 Ton front U-Joint style front axle shafts, both long and short complete.

2.5 Ton and 5 Ton Filter Kits



2.5 Ton Multi-Fuel Filter Kit (591)



5 Ton NHC 250 Cummins Filter Kit (595)



5 Ton 900 Series 8.3 Cummins Filter Kit (59583)



5 Ton Multi-Fuel Filter Kit (592)

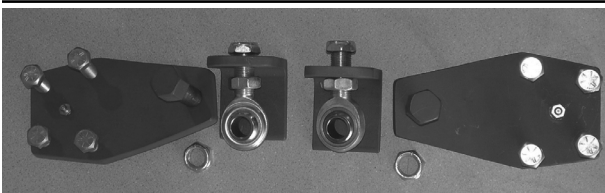


MTD-250 B Driveline Ends

Just take to a drive line shop and have our ends welded to your original driveline. Advantage: low cost, easy to replace.

MTD-250 A - A Complete 2.5 Ton Driveline

These drivelines used mostly with the ATC-250 2.5 ton transfer case and 2.5 Ton Rockwell axles. The MTD-250-A uses 1410 U Joints.



RSL-250 Rear Steering Lock

Our rear steering lock is a must for rear steering vehicles. Lock pins installed on each knuckle for maximum safety.

BOYCE

PARTS

WE ARE ONE OF THE LARGEST DEALERS IN MILITARY PARTS. WE CARRY EVERYTHING LISTED BELOW. FOR MORE PARTS INFO, CHECK US OUT AT WWW.BOYCEEQUIPMENT.COM



ROCKWELL 2.5 TON AXLE PARTS



M SERIES COOLING SYSTEM PARTS



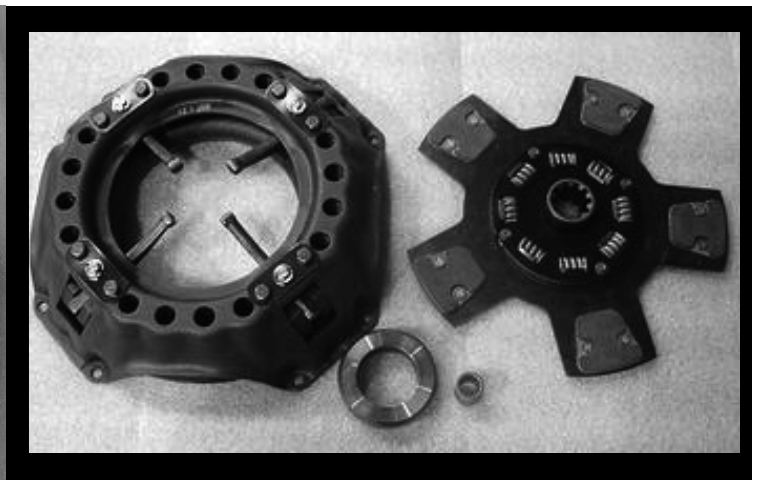
ROCKWELL 5 TON AXLE PARTS



FILTER AND FAN BELT KITS



M37/M715 TRUCK PARTS

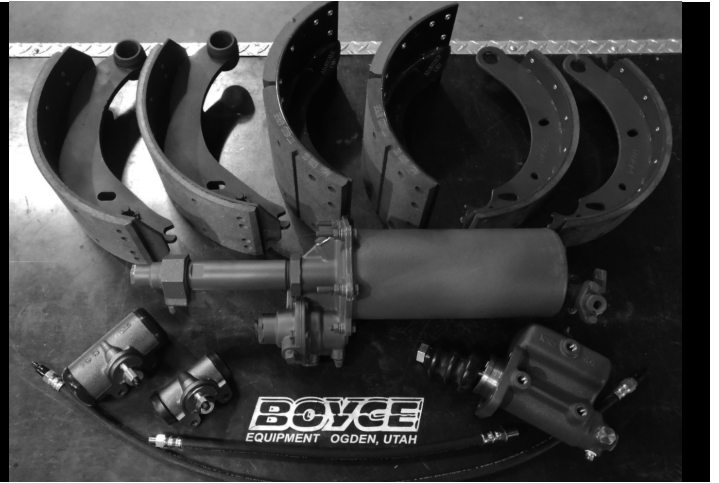


CLUTCH KITS

BOYCE



ELECTRICAL



BRAKE PARTS



EXHAUST PARTS



BODY PARTS

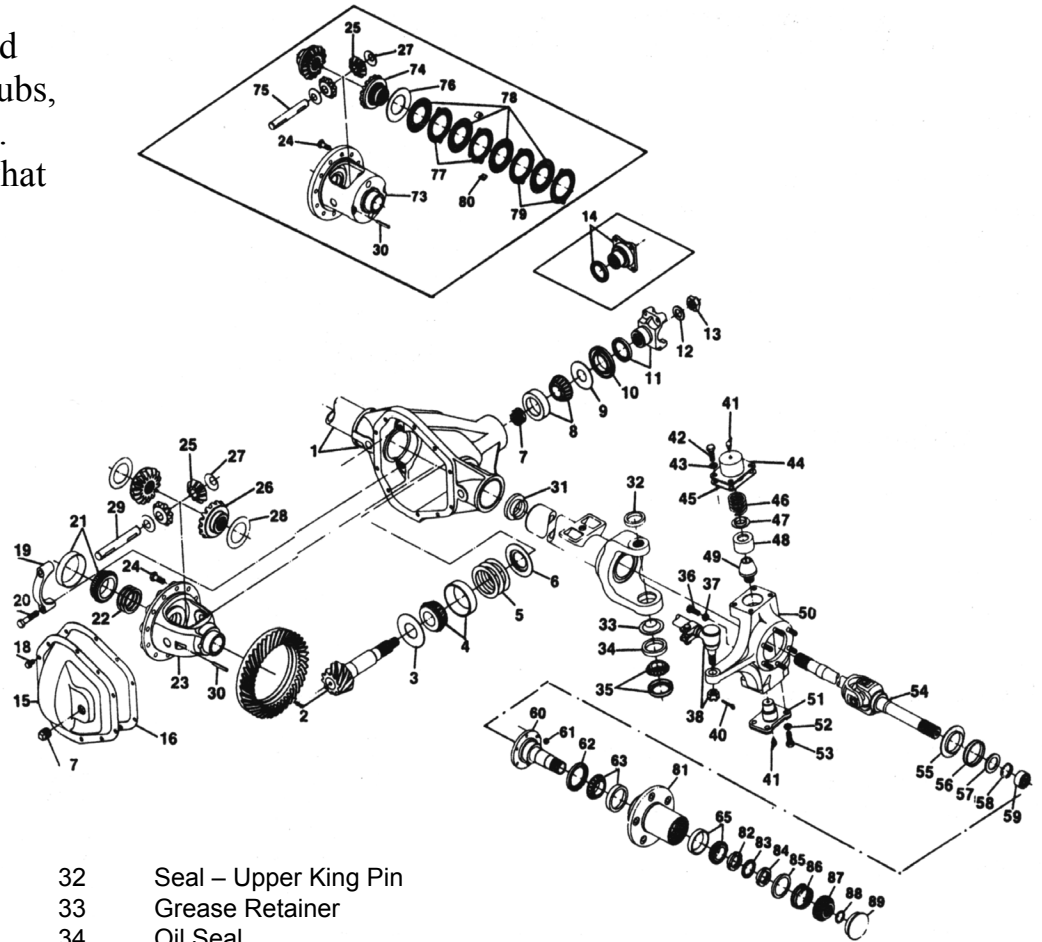


GMC 2.5 TON PARTS



Model 60 Front Axle - GMC/ Chevrolet- Ford- Dodge

We offer new hard to find parts for all Dana Axels, Hubs, Rotors, and Brake Parts. Give us a call, we know what you need!



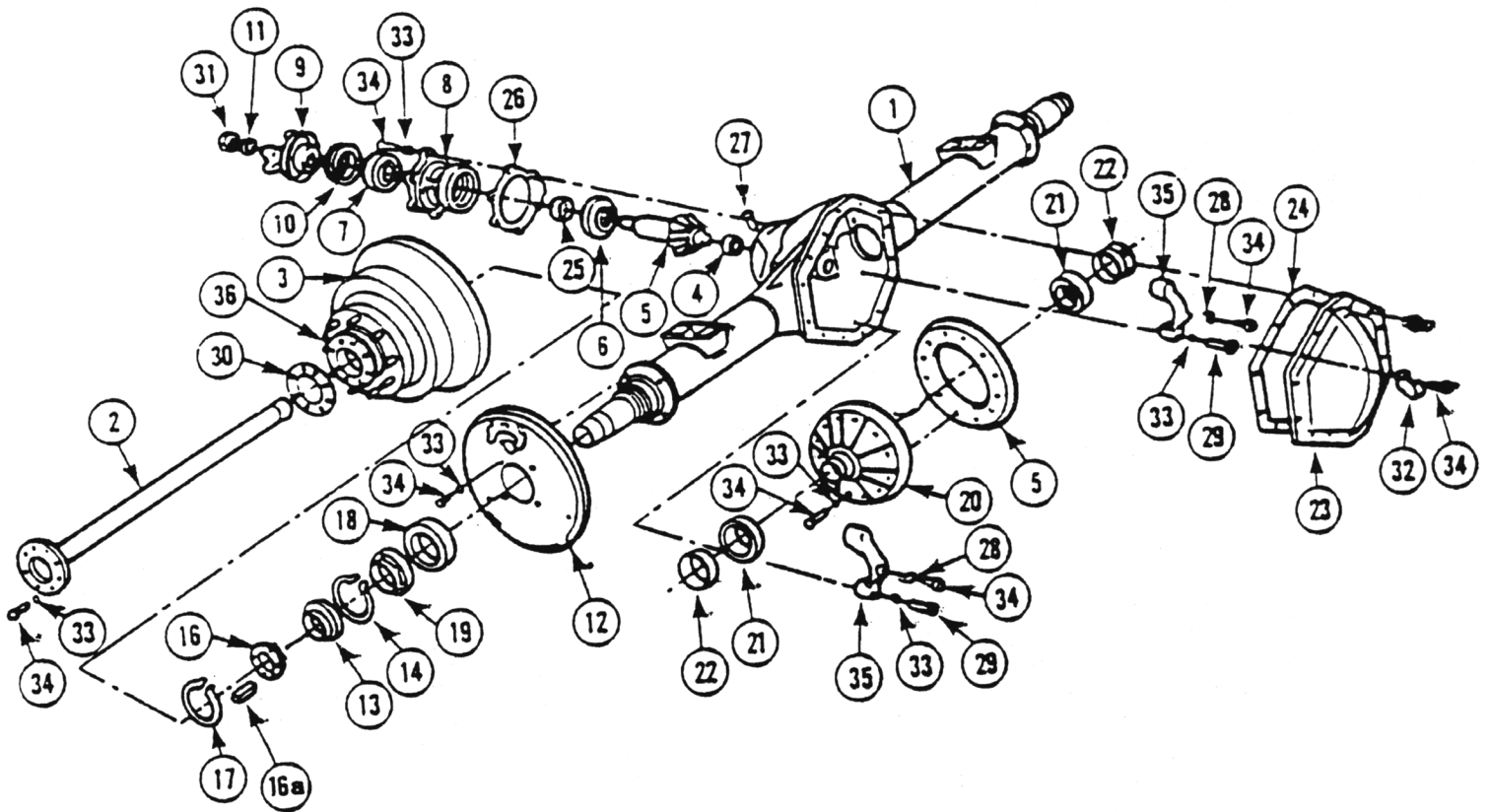
1 (1)	Housing – Axle Service	32	Seal – Upper King Pin	61	Brake Mounting Nut
2	Drive Pinion & Gear Assembly	33	Grease Retainer	62	Oil Seal
3	Slinger – Inner Pinion Bearing	34	Oil Seal	63	KIT – Inner Wheel Bearing
4	KIT – Inner Pinion Bearing	35	KIT – Lower King Pin Bearing	65	KIT – Outer Wheel Bearing
5	Inner Pinion Shim	36	Stop Screw	81 (1)	Wheel Hub
6	Baffle – Pinion Bearing	37	Jam Nut	82	Inner Wheel Bearing Nut
7	Outer Pinion Shims	38 (1)	Tie Rod Assembly	83	Lock Nut
8	KIT – Outer Pinion Bearing	40	Cotter Pin	84	Outer Wheel Bearing Nut
9	Slinger – Outer Pinion Bearing	41	Lube Fitting	85	Spring Retaining Plate
10	Seal – Pinion Oil	42	Nut – Hex Tapered	86	Pressure Spring
11 (2)	End Yoke Assembly	43	Lockwasher – Upper Kin Pin Cap	87	Axle Drive Gear
12	Washer – Pinion Nut	44	Steering Arm (LH only)	88	Snap Ring
13	Pinion Nut	45	Upper King Pin Cap (RH only)	89	Hub Cap
14 (2)	Companion Flange Assembly	46	Gasket – King Pin Cap		
15	Carrier Cover	47	Compression Spring		
16	Carrier Cover Gasket / Sealant	48	Retainer Spring		
17	Plug – Carrier Cover	49	King Pin Bushing		
18	Bolt – Carrier Cover	50	King Pin		
19 (1)	Differential Bearing Cap	51	Knuckle Assembly		
20 (1)	Bolt – Differential Bearing Cap	52	Lower King Pin Bearing Cap		
21	KIT – Differential Bearing	53	Lockwasher – Lower King Pin		
22	Shim – Differential Bearing	54	Cap		
23	Case – Differential	55	Hex Bolt – Lower King Pin Cap		
24	Bolt – Drive Gear	56	Shaft & Joint Assembly		
25	Pinion – Differential	57	Slinger – Spindle Yoke		
26	Gear – Differential	58	(pressed on axle shaft if used)		
27	Thrustwasher – Diff. Pinion	59	Oil Seal		
28	Thrustwasher – Diff. Gear	60	Spacer – Wheel Bearing Spindle		
29	Shaft – Differential Pinion		Oil Seal – Block Vee		
30	Lock – Differential Shaft		Needle Bearing Assembly		
31	Seal & Guide Tube		Wheel Bearing Spindle		

(1) See "Bill of Material Table" on next page
 (2) See "Variable Parts Table" within this section
 (3) Contact Vehicle Manufacturer
 (4) Not Sold Separately



General Motors - 10.5" 14 Bolt Corporate- FULL FLOAT

***WE ALSO OFFER A RUGGED SEMI-FLOT 14-BOLT REAR WITH THE STOCK 6-HOLE WHEEL PATTERN TO USE WITH YOUR STOCK WHEELS.
CALL FOR THE LATEST INFO.***



- | | | | | | |
|----|---------------------------------|-----|------------------------------|----|--------------------------|
| 1 | Housing, Rear Axle | 14 | Ring, Axle Shaft | 27 | Ventilator, Axle Housing |
| 2 | Shaft, Rear Axle | 16 | Nut, Hub Adjustment | 28 | Lock, Adjustment Nut |
| 3 | Drum, Rear Wheel | 16a | Key, Adjustment Nut Lock | 29 | Bolt, Diff Cap |
| 4 | Bearing, Drive Pinion | 17 | Key, Retaining Ring Lock | 30 | Gasket, Axle Shaft |
| 5 | Gear, Pinion | 18 | Seal, Oil Deflector | 31 | Nut, Prop Shaft |
| 6 | Bearing, Pinion (Inter) | 19 | Bearing, Rear Wheel Inner | 32 | Clip, Axle Cover |
| 7 | Bearing, Pinion (Front) | 20 | Case, Differential | 33 | Washer, Cover Bolts |
| 8 | Retainer, Oil Seal | 21 | Bearing, Differential Side | 34 | Bolts, Cover (Hex) |
| 9 | Flange, Prop Shaft | 22 | Nut, Differential Side | 35 | Cap |
| 10 | Seal, Propshaft Pinion Flg Oil | 23 | Cover, Axle Housing | 36 | Hub, Rear Wheel |
| 11 | Washer, Propshaft Pinion Flange | 24 | Gasket, Axle Housing | | |
| 12 | Flange, brake Plate | 25 | Spacer, Pinion Shaft Bearing | | |
| 13 | Bearing, Rear Wheel Outer | 26 | Shim, Pinion Shaft | | |

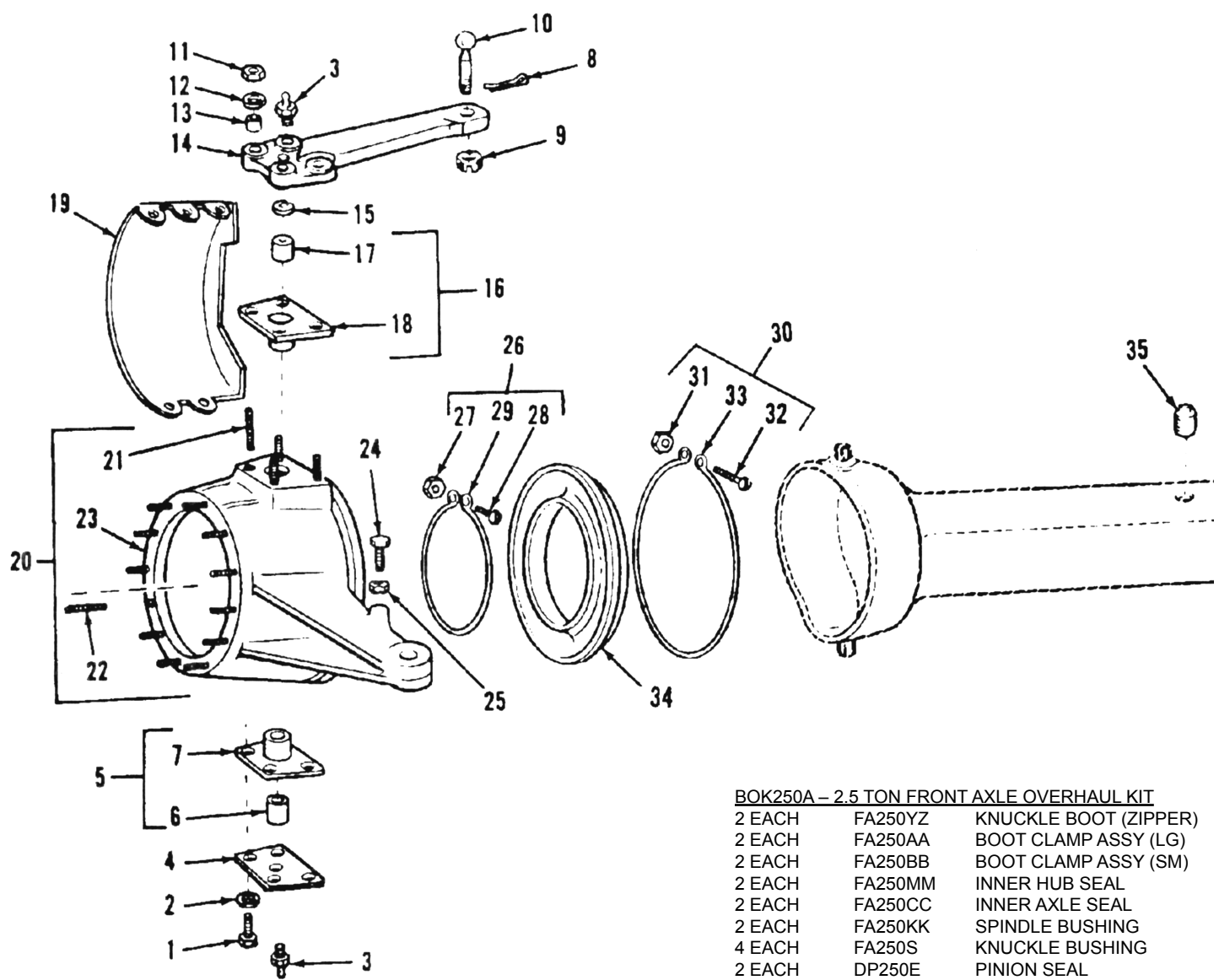


2.5 Ton Rockwell Front Axle Breakdown (Non CTIS) M35A2

FIG	ITEM	BOYCE #	MILITARY #
1	BOLT	FA250GG	12898/7521692
2	LOCK WASHER	FA250K	120898/MS35338-49
3	FITTING	FA250M	504208/MS15003-1
4	PLATE	FA250HH	7521677
5	LOWER SLEEVE W/BUSHING	FA250FF	7521676
6	BUSHING I/BEARING	FA250S	A225874/5283738
7	LOWER SLEEVE	FA250FF	7700120
8	COTTER PIN	FA250P	120123/MS24665-355
9	NUT-CASTELLATED	FA250Q	503609/11609581
10	BALL STUD	FA250N	5167504
11	NUT	FA250L	124634/MS51968-17
12	LOCK WASHER	FA250K	120898/MS35335-38
13	DOWEL/CONE	FA250J	7521694
14	ARM	FA250H	7521682
15	SPACER	FA250R	5283739/108966717
16	UPPER SLEEVE W/BUSHING	FA250T	TD-2297M663/7521690
17	BUSHING I/BEARING	FA250S	A225874/5283738
18	UPPER SLEEVE	FA250T	TD-2297M663/7700120
19	KNUCKLE GUARD	FA250F	7521678
20	KNUCKLE ASSY (RH)	FA250GR	7521688
20	KNUCKLE ASSY (LH)	FA250GL	7521687
21	KNUCKLE STUD	FA250KS	7521689
22	SPINDLE STUD	FA250KSS	10896705
23	KNUCKLE	FA250G	8757695
24	STUD/SCREW	FA250DD	A225875/5225875
25	NUT	FA250DD-1	5225876
26	BOOT CLAMP ASSY (SM)	FA250BB	TD3280J1620/12300576-2/7071100
27	NUT	FA250W	594264/7071097
28	SCREW	FA250X	7521693/7071098
29	BOOT CLAMP (SM)	FA250BB	12300576-2/7071085
30	BOOT CLAMP ASSY (LG)	FA250AA	12300576-1/7071099
31	NUT	FA250W	594264/7071097
32	SCREW	FA250X	7521693/7071098
33	BOOT CLAMP (LG)	FA250A	TD3280J1622/12300576-1/7071084
34	KNUCKLE BOOT (NZ)	FA250Y	7410883
34	KNUCKLE BOOT (ZIPPER)	FA250YZ	7410883
35	RELIEF VALVE ASSY	FA250RV	5196397



2.5 Ton Rockwell Front Axle Breakdown (Non CTIS) M35A2



BOK250A - 2.5 TON FRONT AXLE OVERHAUL KIT

2 EACH	FA250YZ	KNUCKLE BOOT (ZIPPER)
2 EACH	FA250AA	BOOT CLAMP ASSY (LG)
2 EACH	FA250BB	BOOT CLAMP ASSY (SM)
2 EACH	FA250MM	INNER HUB SEAL
2 EACH	FA250CC	INNER AXLE SEAL
2 EACH	FA250KK	SPINDLE BUSHING
4 EACH	FA250S	KNUCKLE BUSHING
2 EACH	DP250E	PINION SEAL
2 EACH	FA250AF	FLANGE GASKET
1 EACH	D250DD	DIFF GASKET
4 EACH	FA250ZZ	SPINDLE NUT
2 EACH	FA250AJ	SPINDLE NUT LOCK

BTK250A - 2.5 TON FRONT AXLE TUNE-UP KIT

2 EACH	FA250YZ	KNUCKLE BOOT (ZIPPER)
2 EACH	FA250MM	INNER HUB SEAL
2 EACH	FA250CC	INNER AXLE SEAL
2 EACH	DP250E	PINION SEAL
2 EACH	FA250AF	FLANGE GASKET



BOK250A



BTK250A



2.5 Ton Rockwell Front Steering (Non CTIS) M35A2

FIG	ITEM	BOYCE #	MILITARY #
1	BOLT	FA250AD	7521631/10896726
2	LOCK WASHER	FA250AE	120384/MS35338-48
3	DRIVE FLANGE ASSY	FA250AB	7521861
4	PLUG	FA250AC	7521762
5	DRIVE FLANGE	FA250AB	8757694
6	FLANGE GASKET	FA250AF	7521787
7	SPINDLE NUT	FA250ZZ	7521633/10896720
8	SPINDLE NUT LOCK	FA250AJ	7521650/10896695
9	OUTER HUB BEARING/CONE	FA250XX	712272
9A	HUB RACE/CUP	FA250RC	712120
10	HUB & DRUM ASSY.	FA250HDA	7529054
11	NUT-SELF LOCK	FA250SS	121932/MS51968-8
12	WASHER	FA250AG	120382/MS35338-46
13	COVER INSPECTION	FA250AH	7521667/10896733
14	BOLT	FA250UU	7521629/10896689
15	ADAPTER	FA250TT	7521636
16	RH LUG NUT	FA250AK	537803/MS51983-2
16	LH LUG NUT	FA250AK	537804/MS51983-3
17	RH WHEEL STUD	FA250QQ	7521661/10896719-2
17	LH WHEEL STUD	FA250QQ	7521660/10896719-1
18	HUB ASSY	FA250WW	7521655/10896708
19	BRAKE DRUM	FA250YY	7521662/10896696
20	INNER HUB BEARING/CONE	FA250VV	712119
20A	HUB RACE/CUP	FA250RC	712120
21	NUT-SELF LOCK	FA250SS	121932/MS51968-8
22	LOCK WASHER	FA250RR	138489/MS35335-35
23	SLINGER/DEFLECTOR	FA250PP	7521654
24	PLATE ASSY	FA250NN	7521766/7699791
25	SPINDLE ASSY	FA250LL-1	8757676
26	INNER HUB SEAL	FA250MM	7521649/10896684
27	SPINDLE W/ BUSHING	FA250LL-2	7521680
28	SPINDLE BUSHING/BEARING	FA250KK	7521681
29	SPINDLE	FA250LL	8757687
30	RH SHORT AXLE SHAFT ASSY	FA250SSS	8738035-1
30	LH LONG AXLE SHAFT ASSY	FA250SSL	8738035
31	THRUST WASHER	FA250TWO	8738033
32	RETAINER	CALL	MS16625-162
33	BEARING	CALL	8738039
34	AXLE SHAFT STUB	FA250STB	8738030
35	AXLE U-JOINT	FA250UJ	8738036
36	INNER LH LONG AXLE SHAFT	FA250INL	8737988
36	INNER RH SHORT AXLE SHAFT	FA250INS	8737987
37	RETAINER W/SEAL	FA250SR	8738032/A1Z44U541
38	INNER AXLE SEAL	FA250CC	7521789
39	RETAINER	FA250V	TD-1244U541/8738031
40	THRUST WASHER	FA250TWI	8738034



2.5 Ton Rockwell Rear Axle Breakdown (Non CTIS) M35A2

BOK250B – 2.5 TON REAR AXLE OVERHAUL KIT

2 EACH	RA250U	INNER HUB SEAL
2 EACH	RA250F	OUTER HUB SEAL
2 EACH	DP250E	PINION SEAL
4 EACH	RA250E	SPINDLE NUT
2 EACH	RA250KK	SPINDLE NUT LOCK
2 EACH	RA250D	FLANGE GASKET
1 EACH	D250DD	DIFF GASKET

BTK250B – 2.5 TON REAR AXLE TUNE-UP KIT

2 EACH	RA250U	INNER HUB SEAL
2 EACH	RA250F	OUTER HUB SEAL
2 EACH	DP250E	PINION SEAL
2 EACH	RA250D	FLANGE GASKET

BHK250B – 2.5 TON REAR AXLE BEARING/SEAL KIT

1 EACH	RA250T	INNER HUB BEARING
1 EACH	RA250JJ	OUTER HUB BEARING
2 EACH	RA250RC	HUB RACE
1 EACH	RA250U	INNER HUB SEAL
1 EACH	RA250F	OUTER HUB SEAL
1 EACH	RA250D	FLANGE GASKET

PER HUB

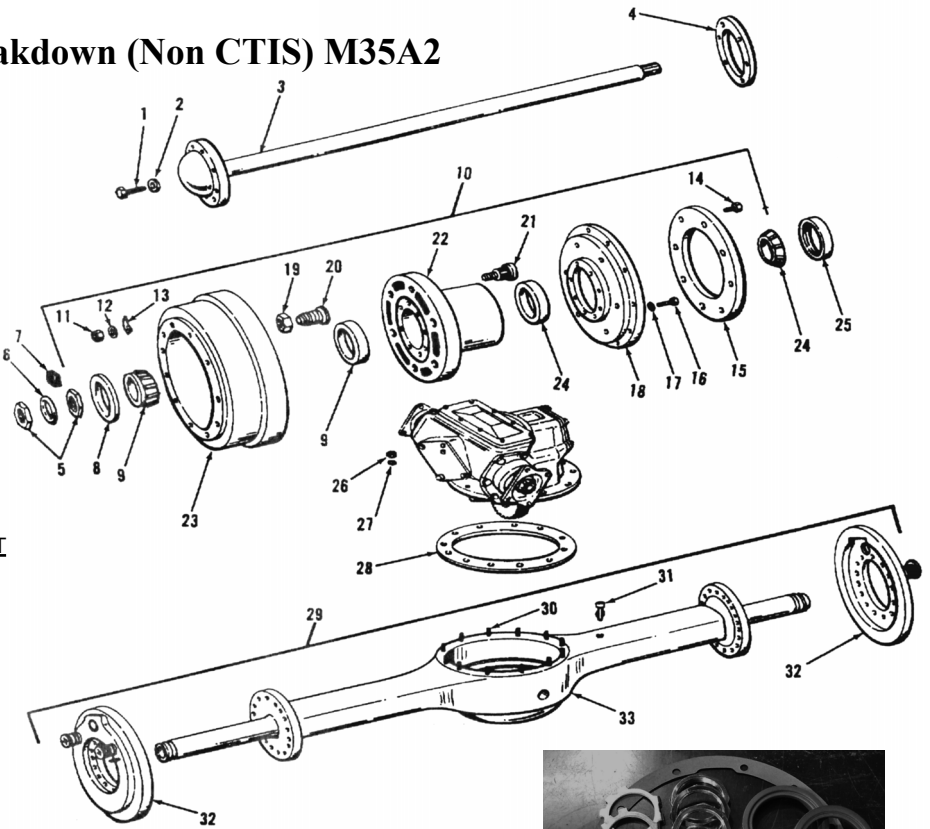


FIG	ITEM	BOYCE #	MILITARY #
1	BOLT	RA250A	7521631/10896726
2	LOCK WASHER	RA250B	120384MS35338-48
3	REAR AXLE SHAFT	RA250C	7521730
4	AXLE FLANGE GASKET	RA250D	7521787
5	SPINDLE NUT	RA250E	7521633/10896720
6	SPINDLE NUT LOCK	RA250KK	7521650/10896695
7	CORK		8759693
8	OUTER HUB SEAL	RA250F	7061238
9	OUTER HUB BEARING	RA250JJ	712272
9A	HUB RACE	RA250RC	712120
10	HUB & DRUM ASSY.	RA250HDA	8757682
11	NUT-SELF LOCKING	RA250G	121932/MS51968-8
12	LOCK WASHER	RA250H	120382/MS35338-46
13	COVER-INSPECTION	RA250J	7521667/10896733
14	BOLT-RIBBED SHOULDER	RA250R	7521629/10896689
15	SLINGER/DEFLECTOR	RA250Q	7521664/10896706
16	BOLT	RA250A	7521631/10896726-1
17	LOCK WASHER	RA250B	120384/MS35338-48
18	ADAPTOR ASSY	RA250P	7521663/8357992
19	RH LUG NUT	RA250LR	537803/MS51983-4
19	LH LUG NUT	RA250LL	537804/MS51983-3
20	RH DUAL WHEEL NUT/STUD		MS53068-2
20	LH DUAL WHEEL NUT/STUD		MS53068-1
21	RH WHEEL STUD	RA250NR	10896719-2/7521661
21	LH WHEEL STUD	RA250NL	7521660/10896719-1
22	HUB	RA250M	7521655/10896708
23	BRAKE DRUM	RA250K	7521662/10896696
24	INNER HUB BEARING	RA250T	712119
24A	HUB RACE	RA250RC	712120
25	INNER HUB SEAL	RA250U	7521649/10896684
26	NUT		MS51968-12
27	WASHER		7748744
28	DIFF GASKET	D250DD	7521782
29	AXLE HOUSING ASSY	RA250GG	8757645
30	DIFF STUD	RA250X	7521785
31	RELIEF VALVE	RA250RV	5196397
32	PLATE ASSY	RA250V	7521766/7699791
33	AXLE HOUSING	RA250GG	7521728/8757667



BOK250B



BTK250B



BHK250B

BOYCE

2.5 Ton Brakes M35A2

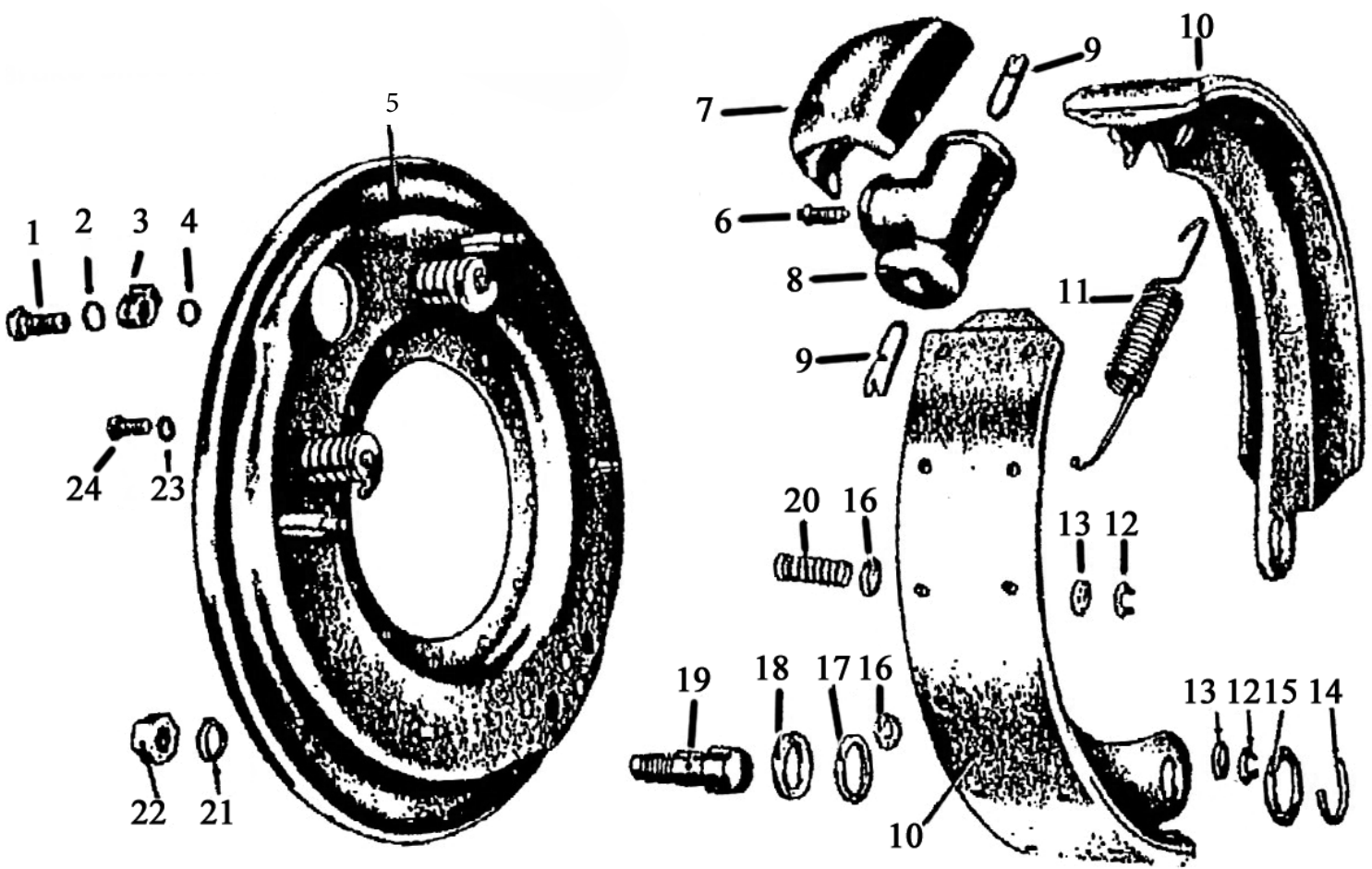


FIG	ITEM	BOYCE #	MILITARY #
1	BRAKE FITTING BOLT	B250A	5167419
2	BRAKE WASHER	B250B	5160323
3	BRAKE FITTING	B250C	A298521
4	BRAKE WASHER	B250D	5214539
5	PLATE ASSY	B250E	7521766/7699794
6	VALVE	B250F	7373260
7	COVER	B250G	7372762
8	BRAKE WHEEL CYLINDER ASSY	B250H	7348976/7411010
9	ROD	B250J	7539270
10	BRAKE SHOE ASSY	B250K	7521767
11	SPRING	B250L	7521729/10896707
12	WASHER/CLIP	B250M	5160353
13	WASHER	B250N	5160352
14	WASHER/CLIP	B250P	5160337
15	WASHER	B250Q	7521711
16	WASHER	B250R	7521765
17	RETAINER	B250S	5160345
18	WASHER	B250T	5160346
19	PIN	B250U	5160341/10896681
20	SPRING	B250V	7061304/10896716
21	WASHER	B250W	131046
22	NUT	B250X	TD-N112
23	WASHER	B250Y	120382
24	BOLT	B250Z	180121



2.5 Ton Rockwell Differential Assy M35A2-M35A3

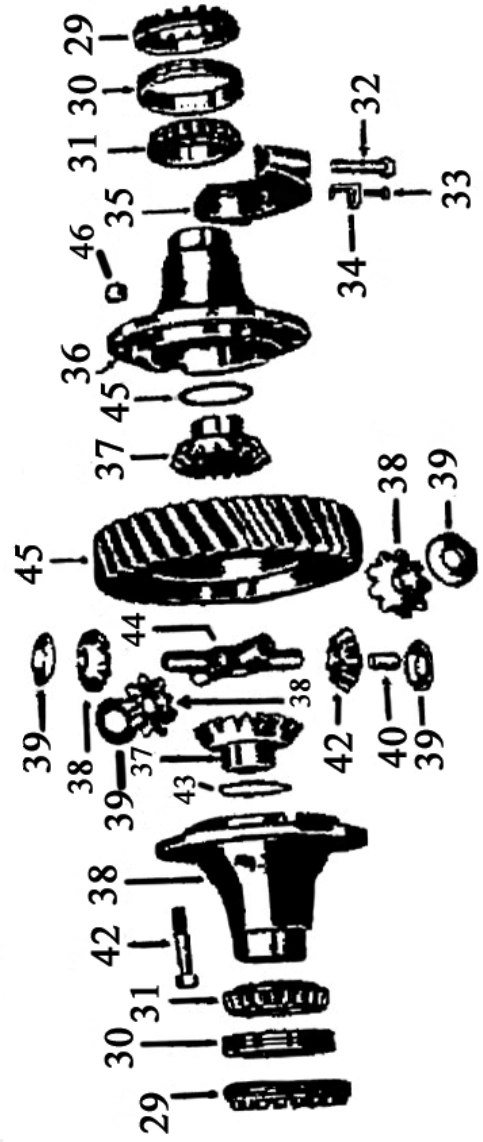
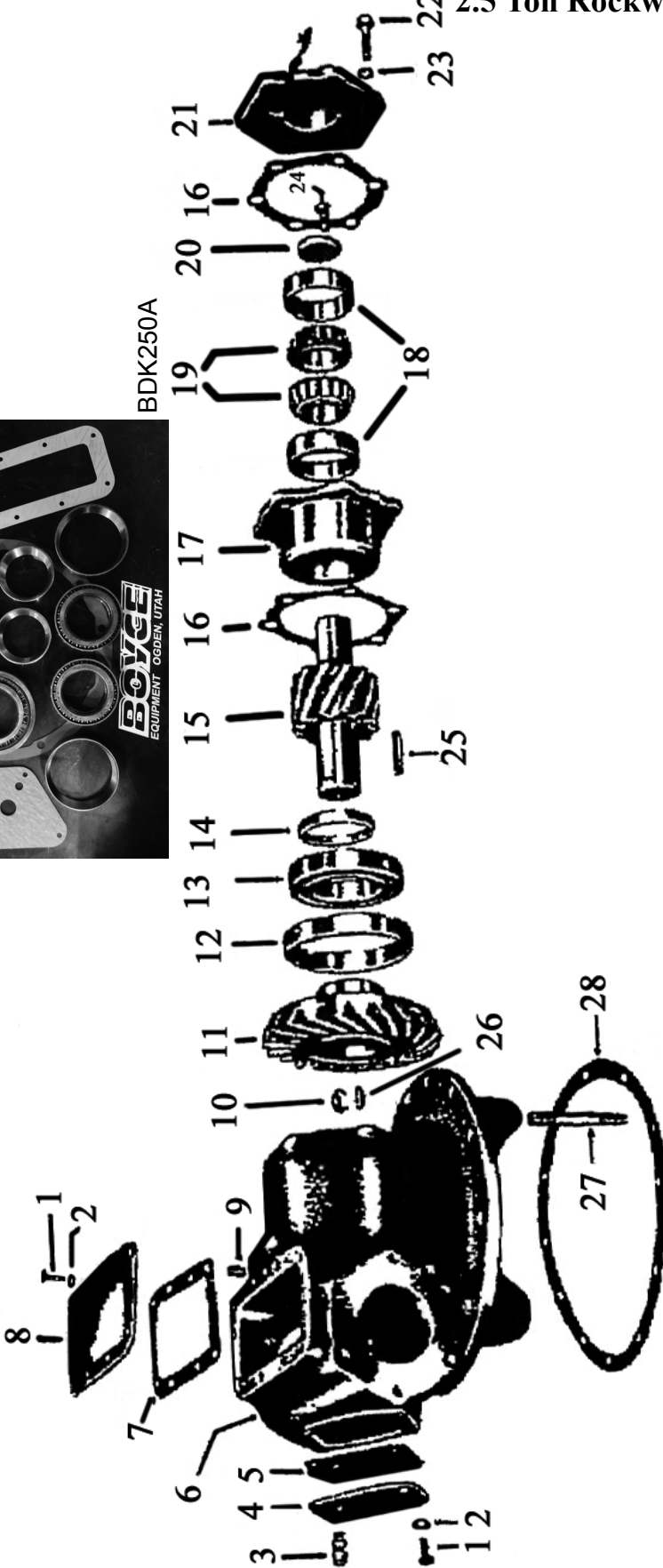
FIG	ITEM	BOYCE #	MILITARY #
1	SCREW	D250A	180120/MS90725-58
2	WASHER	D250B	7373220/MS35338-46
3	VALVE	D250C	7373220
4	COVER	D250D	7521672/10896971
5	GASKET	D250E	7521671
6	CASE	D250F	TD-3800X466/7529063
7	GASKET	D250G	7521780
8	COVER	D250H	7521781
9	SCREW	D250J	7521718
10	NUT	D250K	121949
11	GEAR	D250L	TD-388998262/7529066
12	SLEEVE	D250M	7521719
13	BEARING	D250N	707771
14	SPACER/RING	D250P	7521717
15	PINION SPUR	D250Q	7521685
16	SHIM	D250R	7521713
17	CAGE	D250S	TD-3826L220/7700131
18	CUP/RACE	D250T	706768
19	CONE/BEARING	D250U	705313
20	LOCK PLATE	D250V	7521673
21	COVER	D250W	7521684
22	SCREW	D250X	TD-S2814-1/MS90728-114
23	WASHER	D250Y	120384/MS35338-48
24	SCREW	D250Z	7521338/7535357
25	KEY	D250AA	7521791
26	WASHER	D250BB	120383
27	STUD	D250CC	7521785
28	GASKET	D250DD	7521782
29	RING/NUT	D250EE	7521779
30	CUP/RACE	D250FF	712232
31	CONE/BEARING	D250GG	705060
32	SCREW	D250HH	7521736/596931
33	BOLT	D250JJ	7362375/MS51095-328
34	KEY WASHER	D250KK	7521786
35	CAP	D250LL	TD-3812K89/7700130
36	CASE	D250MM	7521778
37	GEAR	D250NN	TD-2234Y233/7529061
38	PINION	D250PP	TD-A2233D134/8380939
39	THRUST WASHER	D250QQ	TD-1229M1313/7529058
40	BEARING	D250RR	7521790
41	PINION	D250SS	TD-2233D134/8380939
42	BOLT	D250TT	7521790
43	THRUST WASHER	D250UU	TD-1229N1314/7529060
44	SPIDER	D250VV	C61950/8380940
45	GEAR	D250WW	7521686
46	NUT	D250XX	123010/10938304-1



2.5 Ton Rockwell Differential Assy M35A2-M35A3



BDK250A



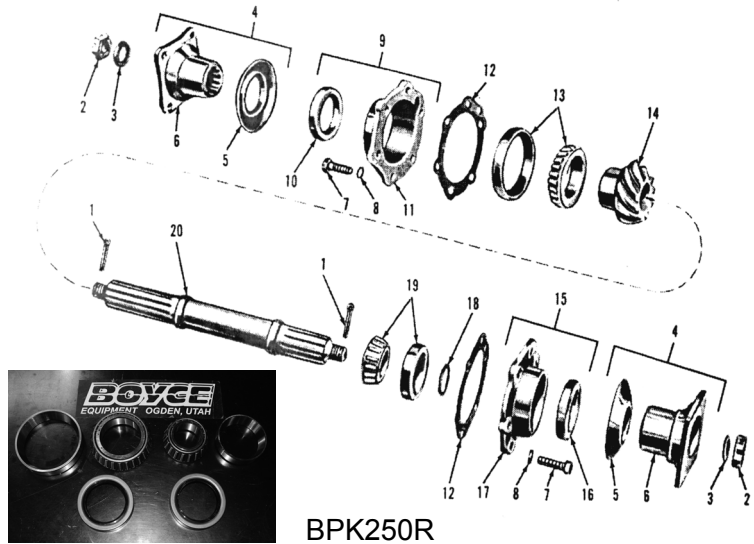
BDK250A - 2.5 TON DIFFERENTIAL MASTER KIT

2 EACH	D250Y	BEARING
2 EACH	D250T	RACE
1 EACH	D250N	BEARING
1 EACH	D250G	GASKET
1 EACH	D250E	GASKET
1 EACH	D250GDD	GASKET
2 EACH	D250GG	BEARING
2 EACH	D250FF	RACE
1 EACH	D250J	BEARING
1 EACH	D250H	RACE
1 EACH	D250N	BEARING
1 EACH	D250P	RACE
2 EACH	D250E	SEAL



2.5 Ton Rockwell Differential Pinion M35A2-M35A3

FIG	ITEM	BOYCE #	MILITARY #
1	PIN	DP250L	103386/MS24665-359
2	NUT	DP250A	7521234
3	WASHER	DP250B	7521235
4	FLANGE ASSY.	DP250CD	7521276
5	DEFLECTOR	DP250D	7521242
6	FLANGE	DP250C	8757674/TD-3897E863
7	SCREW	DP250S	179884/MS90728-112
8	WASHER	DP250T	120384/7748742
9	RETAINER ASSY.	DP250EF	7521703
10	SEAL	DP250E	7521241
11	RETAINER/COVER	DP250F	8757660/TD-3866Z520
12	SHIM	DP250G	7521709
13	RACE/CUP	DP250H	712157
13	BEARING/CONE	DP250J	705475
14	PINION	DP250K	7529055/TD-3890B340
15	RETAINER ASSY.	DP250ER	7521704
16	SEAL	DP250E	7521241
17	RETAINER/COVER	DP250R	7700134/TD-3866Y519
18	SPACER	DP250Q	7700137/TD-1844W335
19	RACE/CUP	DP250P	7521706
19	BEARING/CONE	DP250N	7521705
20	SHAFT	DP250M	7521716



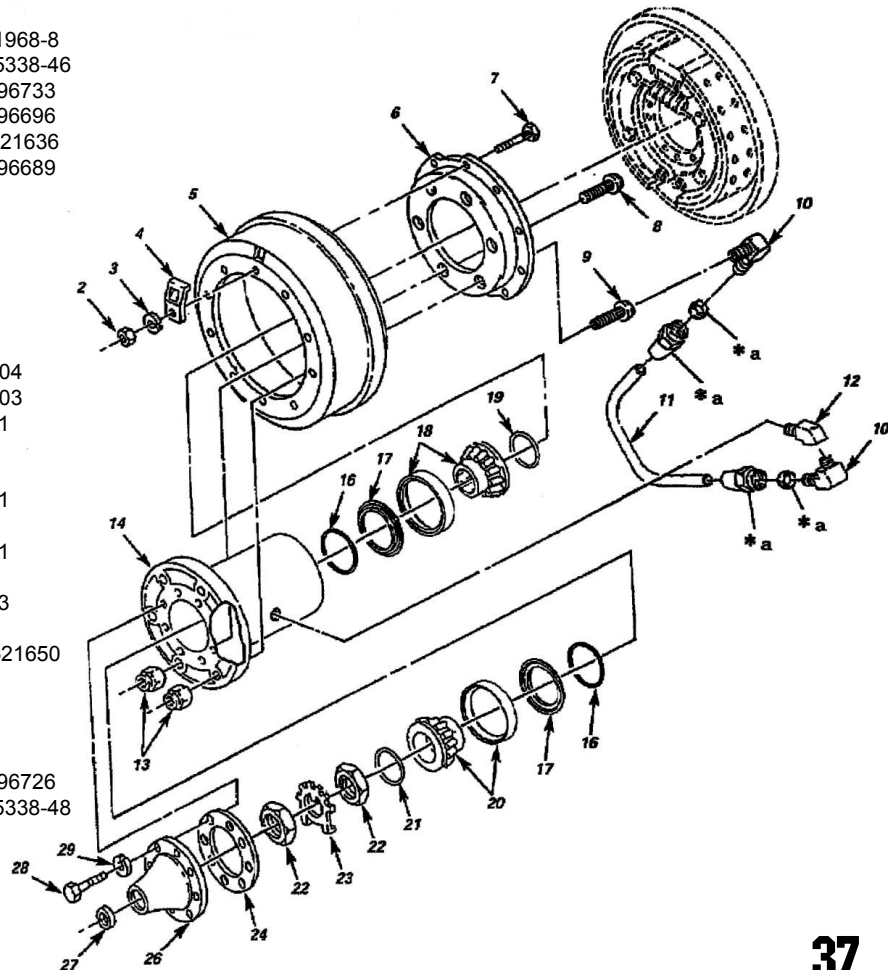
BPK250R

BPK250R - 2.5 TON PINION BEARING/SEAL KIT

1 EACH	DP250J	BEARING
1 EACH	DP250N	BEARING
1 EACH	DP250H	RACE
1 EACH	DP250P	RACE
2 EACH	DP250E	PINION SEAL

2.5 Ton Front Hub Breakdown (CTIS) M35A3

FIG	ITEM	BOYCE #	MILITARY #
1	LH WHEEL HUB ASSY	CFH250A	12448485-1
1	RH WHEEL HUB ASSY	CFH250A	12448485-2
2	NUT	FA250SS	121932/MS51968-8
3	LOCK WASHER	FA250AG	120382/MS35338-46
4	ACCESS COVER	FA250AH	7521667/10896733
5	BRAKE DRUM	FA250YY	7521662/10896696
6	ADAPTER	FA250TT	3268N170/7521636
7	BOLT	FA250UU	7521629/10896689
8	LH WHEEL STUD	FA250QQ	10896719-1
8	RH WHEEL STUD	FA250QQ	10896719-2
9	LH WHEEL STUD	FA250QQ	12448496-3
9	RH WHEEL STUD	FA250QQ	12448496-4
10	ELBOW FITTING	CFH250B	120202BA
11	TUBE	CFH250C	12448706
12	ELBOW PIPE	CFH250D	130339B
13	LH LUG NUT	FA250AK	A52427/537804
13	RH LUG NUT	FA250AK	A32804/537803
14	WHEEL HUB	CFH250E	RCSK14751-1
15	PACKING W/ RETAINER	CFH250F	RCSK16048
16	PACKING	CFH250G	12448547
17	RETAINER	CFH250H	RCSK16048-1
18	INNER BEARING	CFH250J	A50085
19	O-RING	CFH250K	M83461/1-151
20	OUTER BEARING	CFH250L	12448545
21	O-RING	CFH250M	M83461/1-143
22	SPINDLE NUT	FA250ZZ	7521633
23	SPINDLE NUT LOCK	FA250AJ	1229G969/7521650
24	FLANGE GASKET	FA250AF	7521787
25	DRIVE FLANGE ASSY	FA250AB	7521861
26	DRIVE FLANGE	FA250AB	8757694
27	PLUG	FA250AC	7521762
28	BOLT	FA250AD	7521631/10896726
29	LOCK WASHER	FA250AE	120384/MS35338-48





2.5 Ton Rear Hub Breakdown (CTIS) M35A3

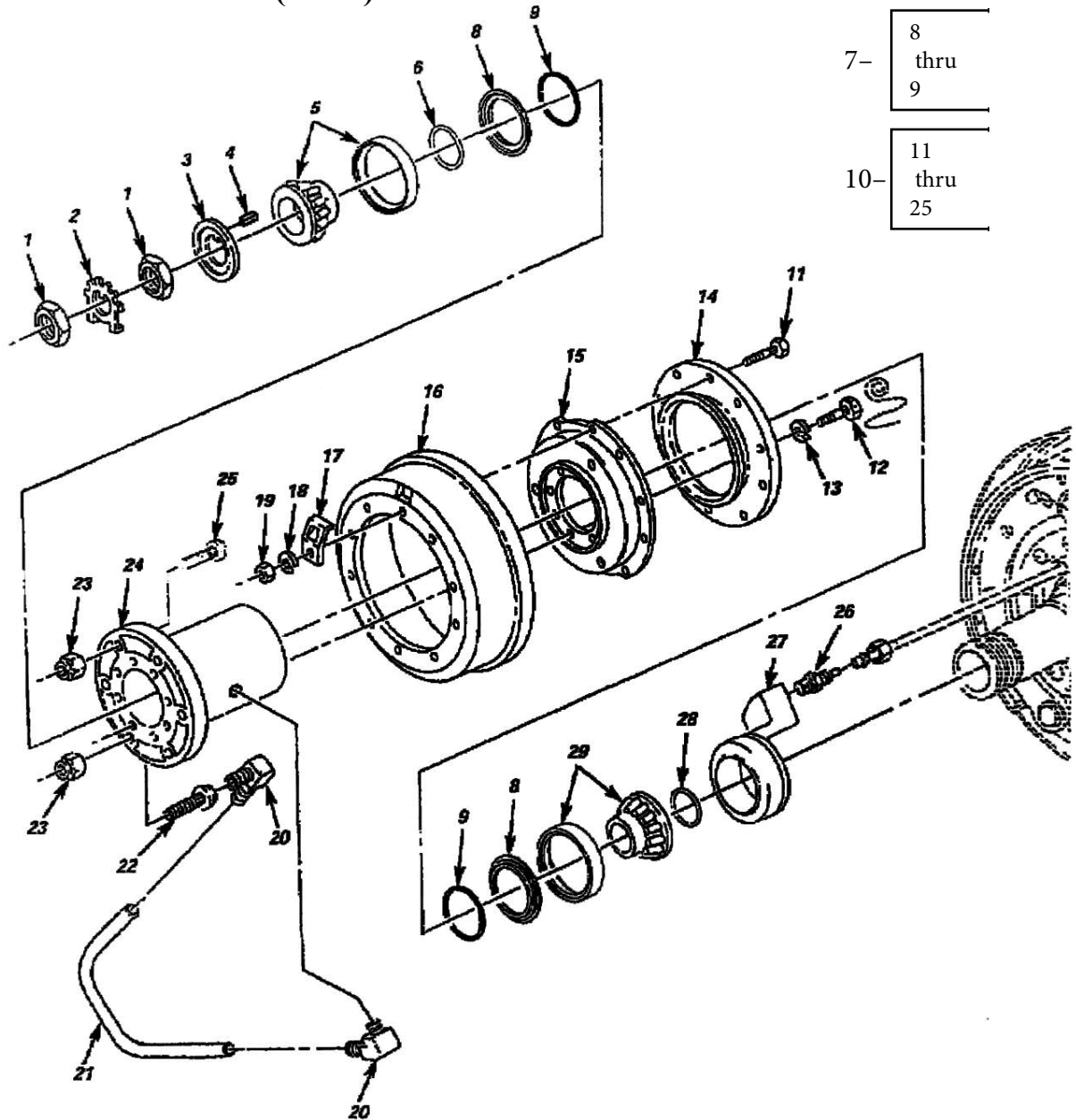


FIG	ITEM	BOYCE #	MILITARY #	FIG	ITEM	BOYCE #	MILITARY #
1	SPINDLE NUT	RA250E	7521633/10896720	16	BRAKE DRUM	RA250K	7521662/10896696
2	SPINDLE NUT LOCK	RA250KK	1229G969/7521650	17	ACCESS COVER	RA250J	7521667/10896733
3	OUTER HUB SEAL	RA250F	7061238/A1205Q667	18	LOCK WASHER	RA250B	MS35338-48/210104-8S
4	CORK		8759693/5X495	19	NUT	RA250G	MS51968-8
5	OUTER BEARING	CRH250A	12448545	20	ELBOW PIPE	CRH250G	12448583-5
6	O-RING	CRH250B	M83461/1-143	21	TUBE	CRH250H	RCSK15109
7	PACKING W/ RETAINER	CRH250C	RCSK16048	22	LH WHEEL STUD	RA250NL	7521660/12448496-1
8	RETAINER	CRH250D	RCSK16048-1	22	RH WHEEL STUD	RA250NR	7521661/12448496-2
9	PACKING	CRH250E	12448547	23	LH LUG NUT	RA250LL	537804/MS51983-3
10	LH WHEEL HUB ASSY	CRH250F	12448528-1	23	RH LUG NUT	RA250LR	537803/MS51983-4
11	BOLT	RA250R	7521629/10896689	24	WHEEL HUB	CRH250J	RCSK14751-1
12	BOLT	RA250A	7521631/10896726-1	25	LH WHEEL STUD	RA250NL	10896719-1
13	LOCK WASHER	RA250B	MS35338-48/210104-8S	25	RH WHEEL STUD	RA250NR	10896719-2
14	DEFLECTOR	RA250Q	7521664/10896706	26	ADAPTER	CRH250K	100102BA
15	ADAPTER	RA250P	7521663/8357992	27	RING ADAPTER	CRH250L	12449015-1
				28	O-RING	CRH250M	M83461/1-151
				29	INNER BEARING	CRH250N	A50085



2.5 Ton GMC Front Axle

FIG	ITEM	MIL #
A	Cone/Bearing	705491
B	Cup/Race	706888
C	Retainer	7411317
D	Housing, Assy	7411299
E	Nut	442800
F	Plug	7376357
G	Gasket	120428
H	Cover	7411295
J	Gasket	7411207
K	Stud/Screw	7411204
L	Spacer	7538373
M	Nut	442801
N	Support	7411452
P	Retainer	7411300
Q	Retainer	7411302
R	Spring	7411305
S	Seal	7411303
T	Seal	CY-3659639
U	Retainer	7411301
V	Gasket	CY-3659641
W	Arm	7411311
X	Spacer	7411315
Y	Shim	7377241
Z	Stud/Screw	7411451
AA	Gasket	7411313
BB	Plug	143980
CC	Washer	7411310
DD	Bearing	7411312
EE	Knuckle	YT-2275666
FF	Fitting	504208
GG	Shield	7411431
HH	Seal, Assy	7411429
JJ	Gasket	7411265
KK	Flange	YT-2283030
LL	Plug	541411
MM	Wedge	7411264
NN	Bolt	7412112
PP	Washer	120382
QQ	Shaft	YT-2283033
RR	Pin	187798
SS	Pin	7377358

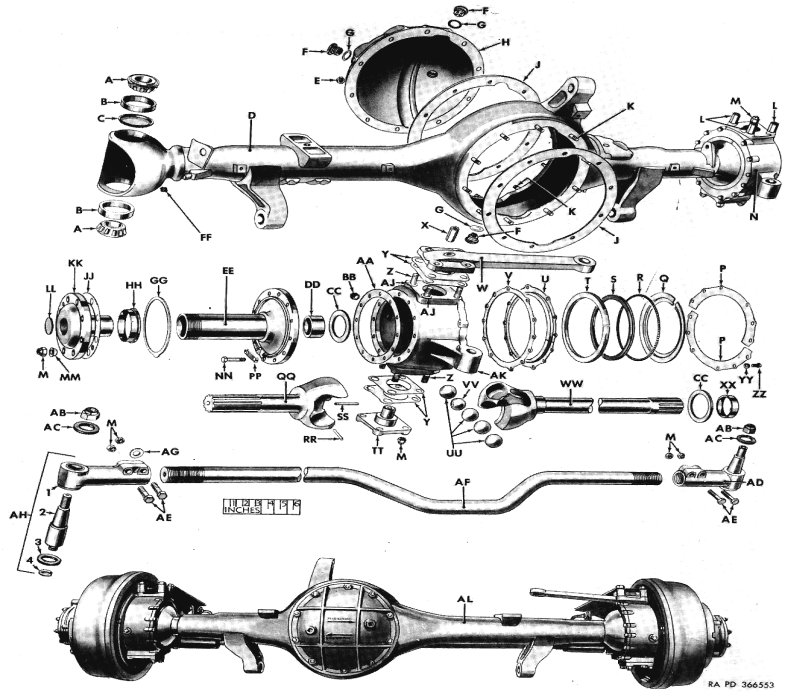
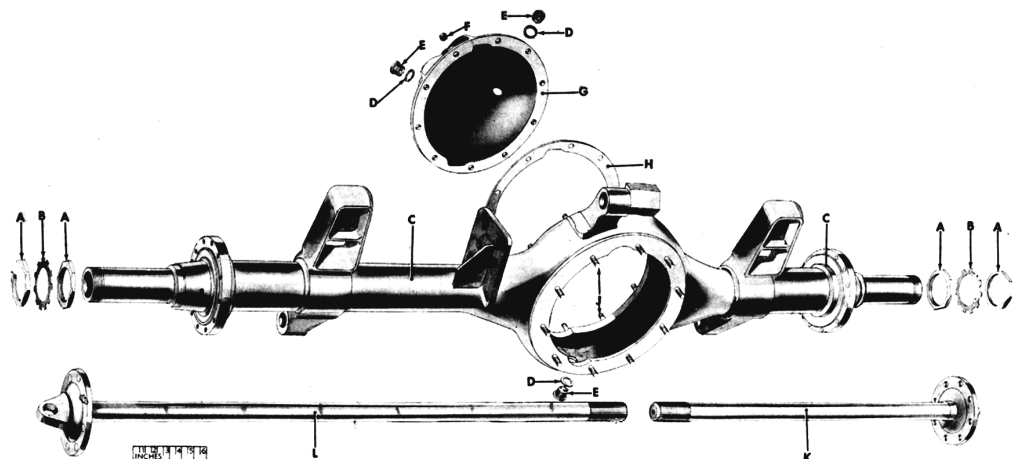


FIG	ITEM	MIL #
TT	Trunnion	7411454
UU	Ball	CY-3660108
VV	Ball	YT-2056647
WW	Shaft	YT-2277364
XX	Seal	7411307
YY	Washer	120638
ZZ	Screw	180075
AB	Nut	442805
AC	Seal	7411418
AD	End, Assy	7411412
AE	Screw	181709
AF	Rod	7411417
AG	Lock	7411419
AH	End Assy	7411416

2.5 Ton GMC Rear Axle

FIG	ITEM	MIL #
A	Nut	7411379
B	Lock	7411378
C	Housing	7411297
D	Gasket	120428
E	Plug	7376357
F	Nut	442800
G	Cover	7411295
H	Gasket	7411207
J	Stud	7411204
K	Shaft	7411267
L	Shaft	7411266





2.5 Ton GMC Differential

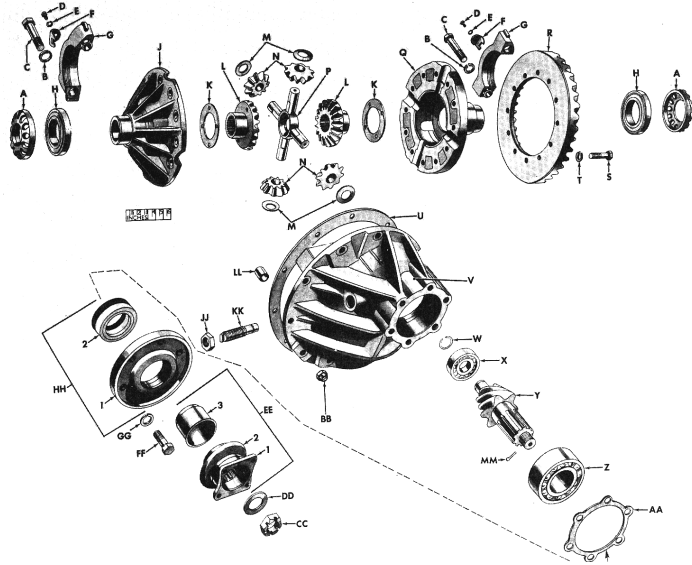
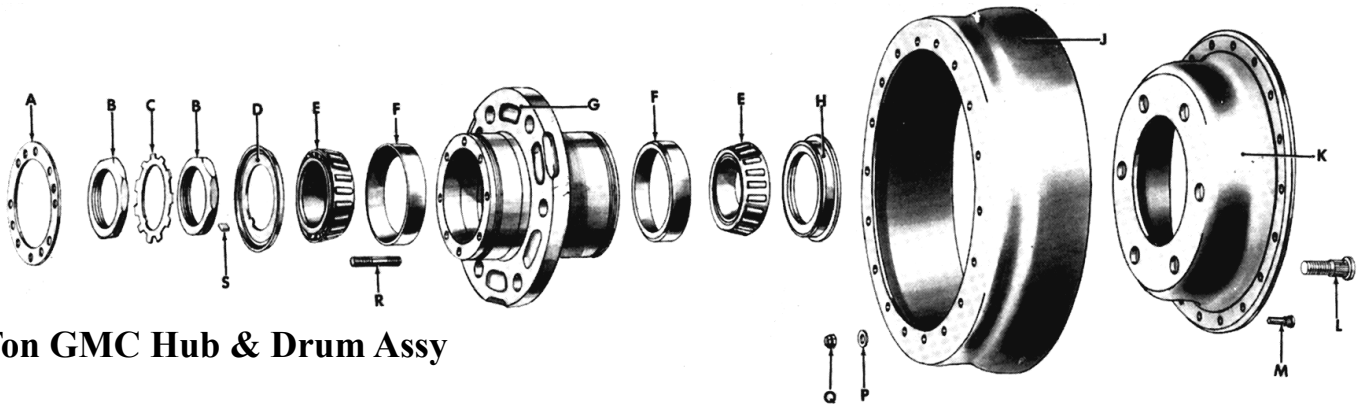


FIG	ITEM	MIL #
A	Nut	7411214
B	Washer	131141
C	Bolt	CV-3652254
D	Screw	180075
E	Washer	120638
F	Lock	7411212
G	Cap	CV-3652275
H	Bearing	707695
J	Cover	CV-3661873
K	Washer	7411222
L	Gear	7411209
M	Washer	7411221
N	Pinion	7411217
P	Spider	7411223
Q	Case	CV-3661872
R	Gear	CV-3652522
S	Bolt	7411211
T	Washer	131101
U	Washer	7411207
V	Carrier	CV-3661871
W	Lock	7411213
X	Bearing	707652
Y	Pinion	CV-3652549
Z	Bearing	710143

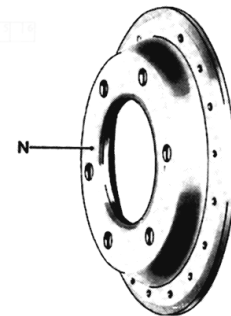
FIG	ITEM	MIL #
AA	Gasket	7411208
BB	Nut	442800
CC	Nut	7411215
DD	Washer	7411224
EE	Flange, Assy	7411206
	1-Flange	YT-2264531
	2-Deflector	7377182
	3-Sleeve	7411220

FIG	ITEM	MIL #
FF	Bolt	7411219
GG	Washer	131140
HH	Seal, Assy	7411218
	1-Retainer	7413230
	2-Seal	7413229
JJ	Nut	124954
KK	Pin	6196340
LL	Dowell	7411225



2.5 Ton GMC Hub & Drum Assy

FIG	ITEM	MILITARY #
A	Gasket	7411265
B	Nut	7411379
C	Lock	7411378
D	Seal, Assy.	7411430
E	Cone	712868
F	Cup	712860
G	Hub	YT-2300042
H	Seal, Assy.	7411439
J	Drum	7411425
K	Back	7413232
L	Stud	501244
M	Stud	7411426
N	Back	7413231
P	Washer	120394
Q	Nut	442799
R	Stud	YT-2209646
S	Seal	7411428





2.5 Ton GMC Brakes

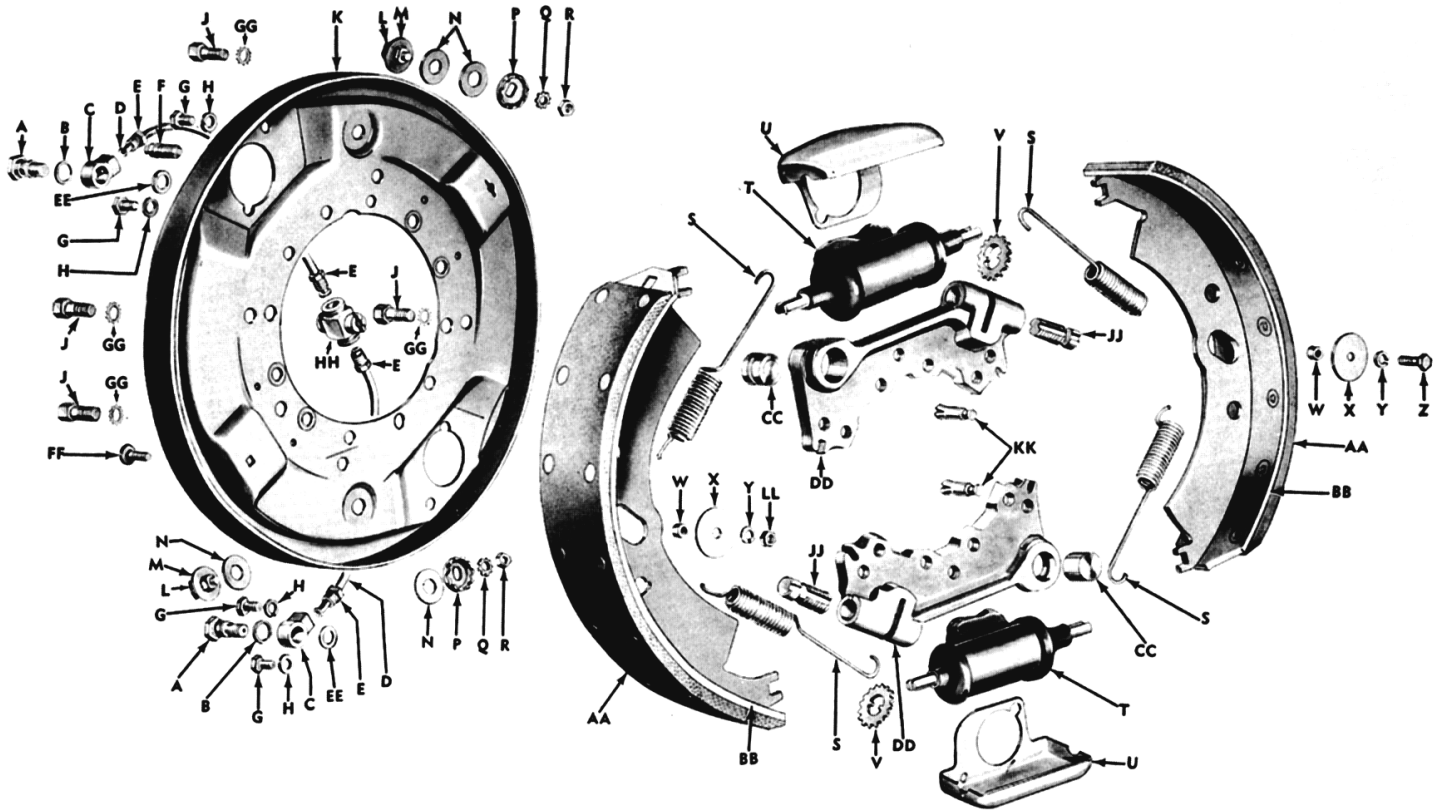


FIG	ITEM	MIL #
A	Bolt	7412079
B	Washer	5298653
C	Fitting	5323092
D	Tubing	44-T-5319-60
E	Nut	142432
F	Screw	7539268
G	Bolt	180075
H	Washer	120214
J	Screw	181629
K	Plate, Assy.	LO-FE-14716
L	Stud	7412118
M	Washer	7412119
N	Washer	7412120
P	Gear	7412104
Q	Washer	138538
R	Nut	120368
S	Spring	7412117

FIG	ITEM	MIL #
S	Spring	7412117
T	Cylinder, Assy.	7402065
U	Shield	7412050
V	Wheel	7412123
W	Sleeve	7412103
X	Washer	5323088
Y	Washer	120380
Z	Screw	181568
AA	Lining	LO-FC-14779
BB	Shoe, Assy.	LO-FE-3413
CC	Pin	7412106
DD	Block	LO-FE-14752

FIG	ITEM	MIL #
EE	Gasket	7412088
FF	Bolt	7411760
GG	Fitting	7411760
HH	Screw	7412109
JJ	Nut	124925
KK	Washer	120382
LL	Pin	7412107
MM	Washer	138542
NN	Nut	121996



5 Ton Rockwell Front Axle (Non CTIS)

FIG	ITEM	BOY #	MIL #
1	WASHER	FA500A	120384
2	BOLT	FA500B	7521631
3	FLANGE	FA500C	7346991
4	GASKET	FA500D	7346993
5	SPINDLE NUT	FA500E	TD-1227P328
6	SPINDLE WASHER	FA500F	7007089
7	SPINDLE NUT	FA500G	7346884
8	OUTER BEARING	FA500H	7411072
9	RACE	FA500J	706691
10	INNER BEARING	FA500K	7409349
11	INNER HUB SEAL	FA500L	7409550
12	SLINGER	FA500M	7409551
13	KNUCKLE ASSY (LH)	FA500NL	7346815
13	KNUCKLE ASSY (RH)	FA500NR	7346816
14	KNUCKLE STEER STUD	FA500P	7346900
15	SLEEVE ASSY	FA500Q	7346971
16	SPACER/WASHER	FA500R	TD-1244B548
17	DOWEL	FA500S	7346812
18	WASHER	FA500T	138502
19	NUT	FA500U	7346813
20	FITTING	FA500V	45-F-448-200
21	STEERING ARM	FA500W	7346979
22	BALL	FA500X	7346980
23	KNUCKLE BUSHING	FA500Y	7346972
24	BOOT CLAMP	FA500Z	7346976
25	CASTLE NUT	FA500AA	123067
26	PIN	FA500BB	137204
27	SCREW	FA500CC	TD-10X272
28	RING	FA500DD	7346975
29	KNUCKLE BOOT (NZ)	FA500EE	7346994
29	KNUCKLE BOOT (Z)	FA500EEZ	7346994
30	BOOT CLAMP NUT	FA500FF	7071097
31	BOOT CLAMP SCREW	FA500GG	7521693
32	SCREW/BOLT	FA500HH	180255
33	WASHER	FA500JJ	121574
34	KNUCKLE GUARD	FA500KK	7346977
35	TOP PLATE	FA500LL	7346974
36	WASHER	FA500MM	121574
37	SCREW/BOLT	FA500NN	181776
38	SPACER	FA500PP	7346987
39	THRUST WASHER	FA500QQ	7346986
40	INNER AXLE SEAL	FA500RR	500135/10938292
41	RETAINER ASSY	FA500SS	7346951
42	KNUCKLE STUD	FA500TT	7346811
43	SCREW	FA500UU	102706
44	AXLE SHAFT ASSY (LH)	FA500VVL	7346985
44	AXLE SHAFT ASSY (RH)	FA500VVR	7346984
45	SPINDLE BUSHING	FA500WW	7346983
46	SPINDLE ASSY	FA500XX	7346982
47	WASHER	FA500YY	138498
48	NUT	FA500ZZ	121983



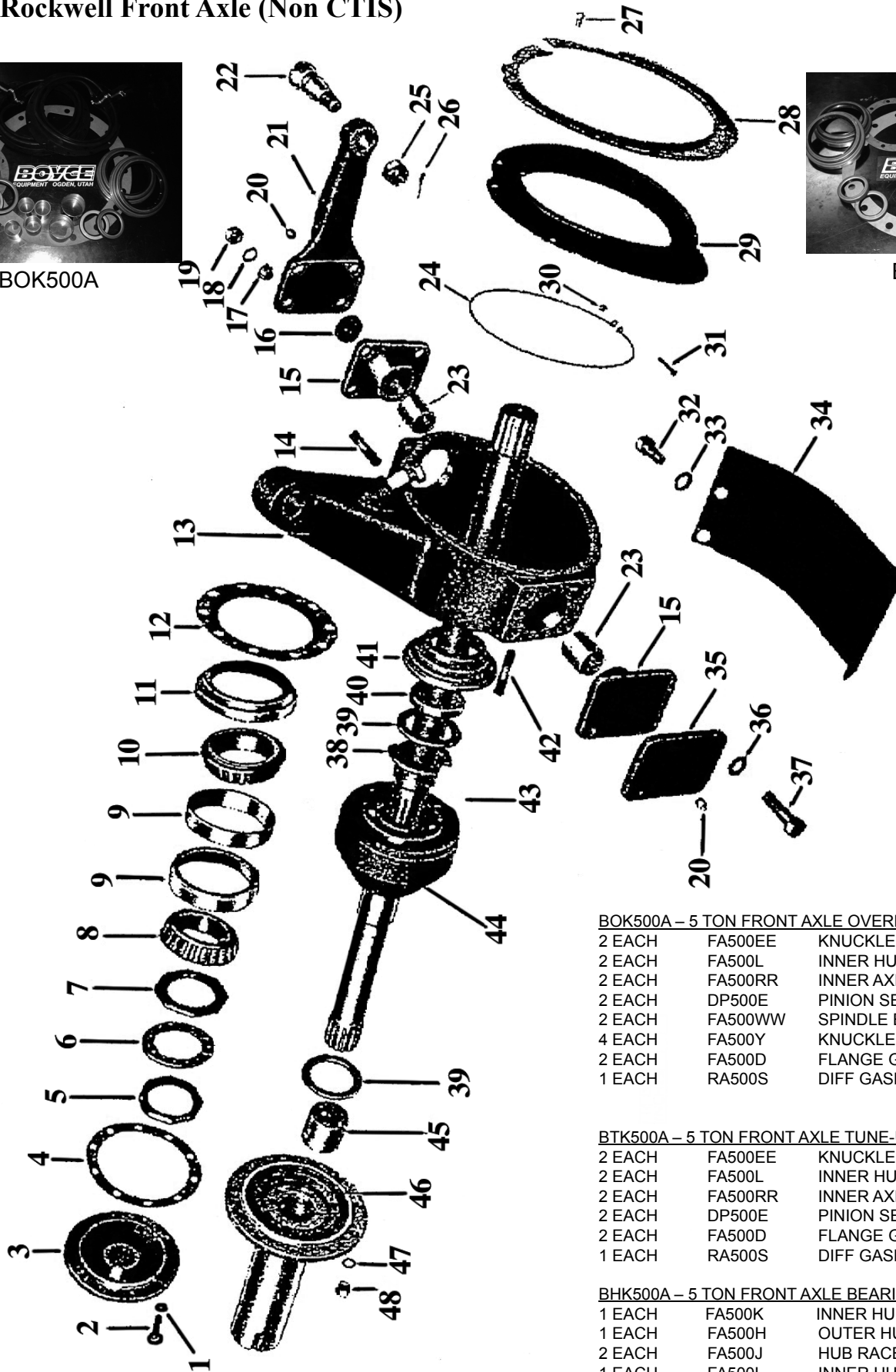
5 Ton Rockwell Front Axle (Non CTIS)



BOK500A



BTK500A



BOK500A – 5 TON FRONT AXLE OVERHAUL KIT

2 EACH	FA500EE	KNUCKLE BOOT
2 EACH	FA500L	INNER HUB SEAL
2 EACH	FA500RR	INNER AXLE SEAL
2 EACH	DP500E	PINION SEAL
2 EACH	FA500WW	SPINDLE BUSHING
4 EACH	FA500Y	KNUCKLE BUSHING
2 EACH	FA500D	FLANGE GASKET
1 EACH	RA500S	DIFF GASKET

BTK500A – 5 TON FRONT AXLE TUNE-UP KIT

2 EACH	FA500EE	KNUCKLE BOOT
2 EACH	FA500L	INNER HUB SEAL
2 EACH	FA500RR	INNER AXLE SEAL
2 EACH	DP500E	PINION SEAL
2 EACH	FA500D	FLANGE GASKET
1 EACH	RA500S	DIFF GASKET

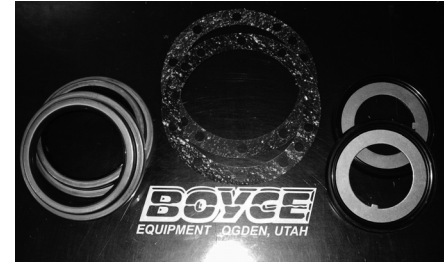
BHK500A – 5 TON FRONT AXLE BEARING/SEAL KIT

1 EACH	FA500K	INNER HUB BEARING
1 EACH	FA500H	OUTER HUB BEARING
2 EACH	FA500J	HUB RACE
1 EACH	FA500L	INNER HUB SEAL
1 EACH	FA500D	FLANGE GASKET

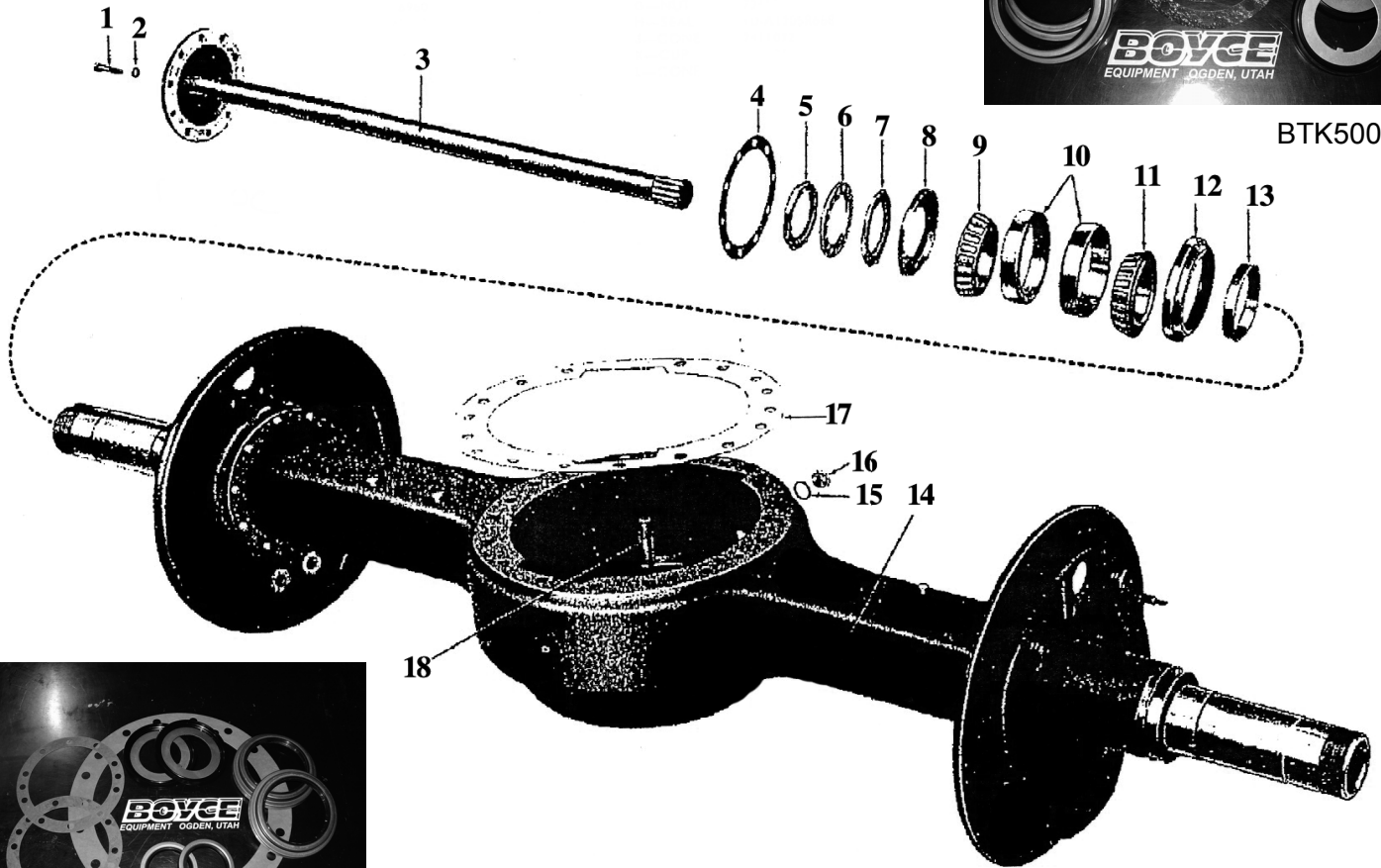
PER HUB



5 Ton Rockwell Rear Axle



BTK500B



BOK500B

FIG	ITEM	BOYCE #	MILIARY #
1	BOLT	RA500A	7521631
2	WASHER	RA500B	120384
3	AXLE SHAFT	RA500C	7346960
4	GASKET	RA500D	7346993
5	SPINDLE NUT	RA500E	TD-1227P328
6	WASHER	RA500F	7007089
7	SPINDLE NUT	RA500G	7346884
8	OUTER SEAL	RA500H	TD-A1205R668
9	OUTER BEARING	RA500J	7411072
10	RACE	RA500K	706691
11	INNER BEARING	RA500L	7409349
12	INNER HUB SEAL	RA500M	7409550
13	WIPER SLEEVE	RA500N	7409553
14	HOUSING ASSY	RA500P	7376264
15	ORING/GASKET	RA500Q	120428
16	PLUG	RA500R	7326126
17	GASKET	RA500S	7346814
18	STUD	RA500T	7346810

BTK500B - 5 TON REAR AXLE TUNE-UP KIT

2 EACH	RA500M	INNER HUB SEAL
2 EACH	RA500H	OUTER HUB SEAL
2 EACH	RA500D	FLANGE GASKET

BHK500B - 5 TON REAR AXLE BEARING/SEAL KIT

1 EACH	RA500L	INNER HUB BEARING
1 EACH	RA500H	OUTER HUB BEARING
2 EACH	RA500K	HUB RACE
1 EACH	RA500M	INNER HUB SEAL
1 EACH	RA500H	OUTER HUB SEAL
1 EACH	RA500D	FLANGE GASKET
1 EACH	RA500N	WIPER SLEEVE
PER HUB		

BOK500B - 5 TON REAR AXLE OVERHAUL KIT

2 EACH	RA500M	INNER HUB BEARING
2 EACH	RA500H	OUTER HUB BEARING
2 EACH	DP500E	PINION SEAL
2 EACH	RA500D	FLANGE GASKET
1 EACH	RA500S	DIFF GASKET



5 Ton Front Hub (Non CTIS)

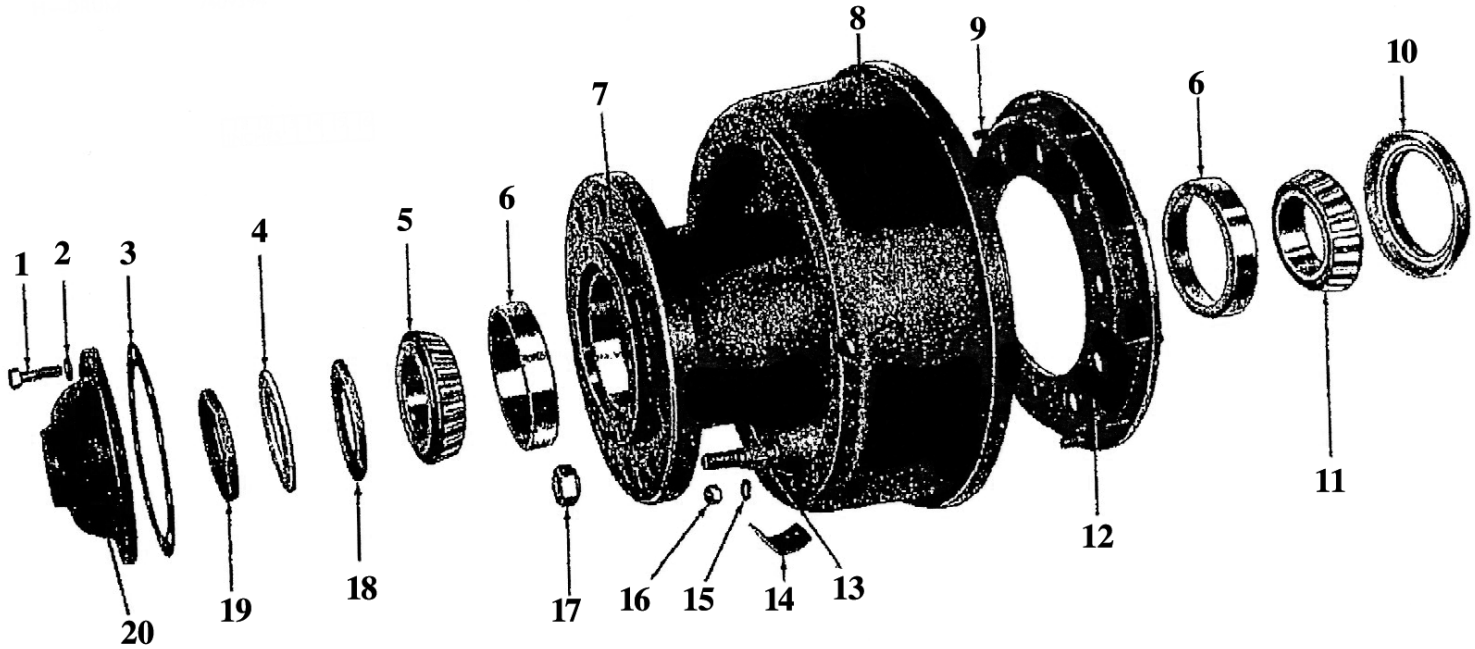


FIG	ITEM	BOYCE #	MILITARY #
1	BOLT	FH500A	7521631
2	WASHER	FH500B	120384
3	GASKET	FH500C	7346993
4	WASHER	FH500D	7007089
5	OUTER BEARING	FH500E	7411072
6	RACE	FH500F	706691
7	HUB ASSY	FH500G	7409395
8	DRUM	FH500H	7409394
9	BOLT	FH500J	7409389
10	INNER HUB SEAL	FH500K	7409550
11	INNER HUB BEARING	FH500L	7409349
12	ADAPTER	FH500M	7409390
13	WHEEL STUD (LH)	FH500NL	7409554
13	WHEEL STUD (RH)	FH500NR	7409555
14	COVER	FH500P	7409393
15	WASHER	FH500Q	120383
16	NUT	FH500R	120370
17	LUG NUT	FH500SL	537804
17	LUG NUT	FH500SR	537803
18	SPINDLE NUT	FH500T	7346884
19	SPINDLE NUT	FH500U	TD-1227P328
20	FLANGE	FH500V	7346991

BHK500A – 5 TON FRONT AXLE BEARING/SEAL KIT

1 EACH	FH500L	INNER HUB BEARING
1 EACH	FH500E	OUTER HUB BEARING
2 EACH	FH500F	HUB RACE
1 EACH	FH500K	INNER HUB SEAL
1 EACH	FH500C	FLANGE GASKET
PER HUB		



BHK500A



5 Ton Rear Hub (Non CTIS)

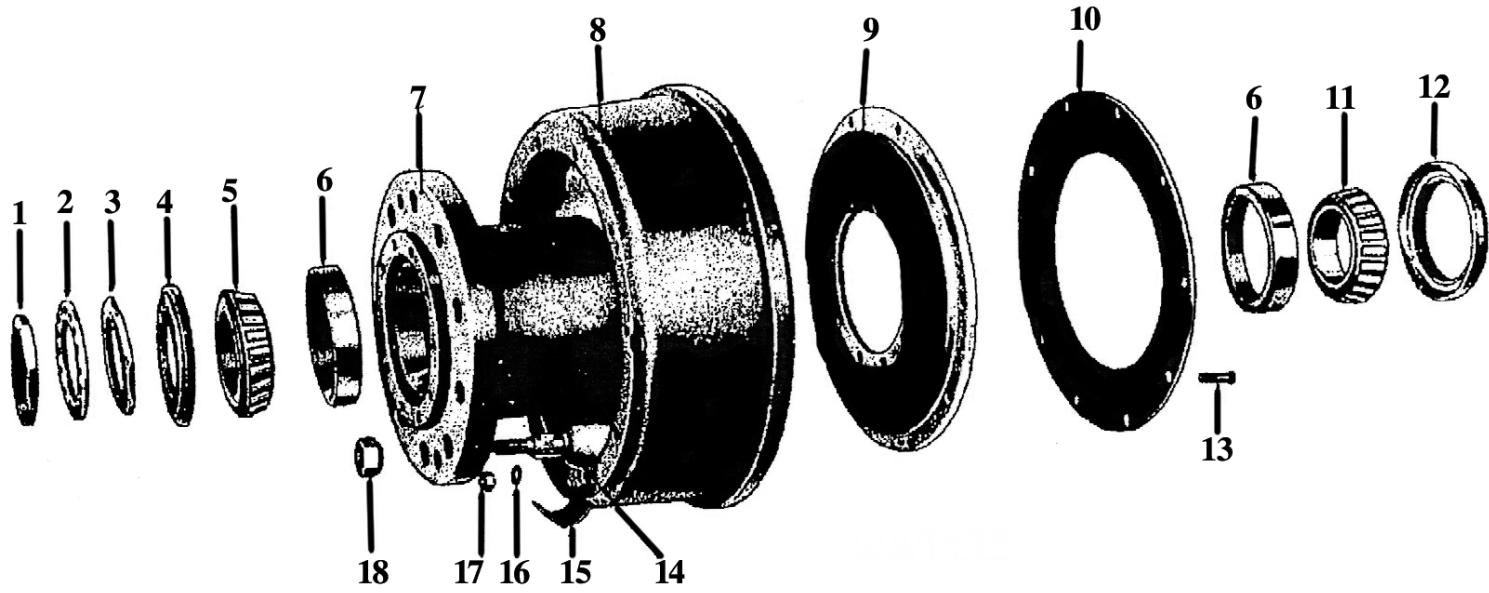


FIG	ITEM	BOYCE #	MILITARY #
1	SPINDLE NUT	RH500A	7346885
2	WASHER	RH500B	7007089
3	SPINDLE NUT	RH500C	7409603
4	OUTER SEAL	RH500D	7413447
5	OUTER BEARING	RH500E	705155
6	RACE	RH500F	706691
7	HUB ASSY	RH500G	7409395
8	DRUM	RH500H	7409394
9	ADAPTER	RH500J	7409388
10	SLINGER	RH500K	7409556
11	INNER BEARING	RH500L	712286
12	INNER HUB SEAL	RH500M	7409550
13	BOLT	RH500N	7409389
14	WHEEL STUD (LH)	RH500PL	7409554
14	WHEEL STUD (RH)	RH500PR	7409555
15	COVER	RH500Q	7409393
16	WASHER	RH500R	120383
17	NUT	RH500S	120370
18	LUG NUT (RH)	RH500TR	537803
18	LUG NUT (LH)	RH500TL	537804

BHK500B – 5 TON REAR AXLE BEARING/SEAL KIT

1 EACH	RH500L	INNER HUB BEARING
1 EACH	RH500E	OUTER HUB BEARING
2 EACH	RH500F	HUB RACE
1 EACH	RH500M	INNER HUB SEAL
1 EACH	RH500D	OUTER HUB SEAL
1 EACH	RA500D	FLANGE GASKET
1 EACH	RA500N	WIPER SLEEVE

PER HUB



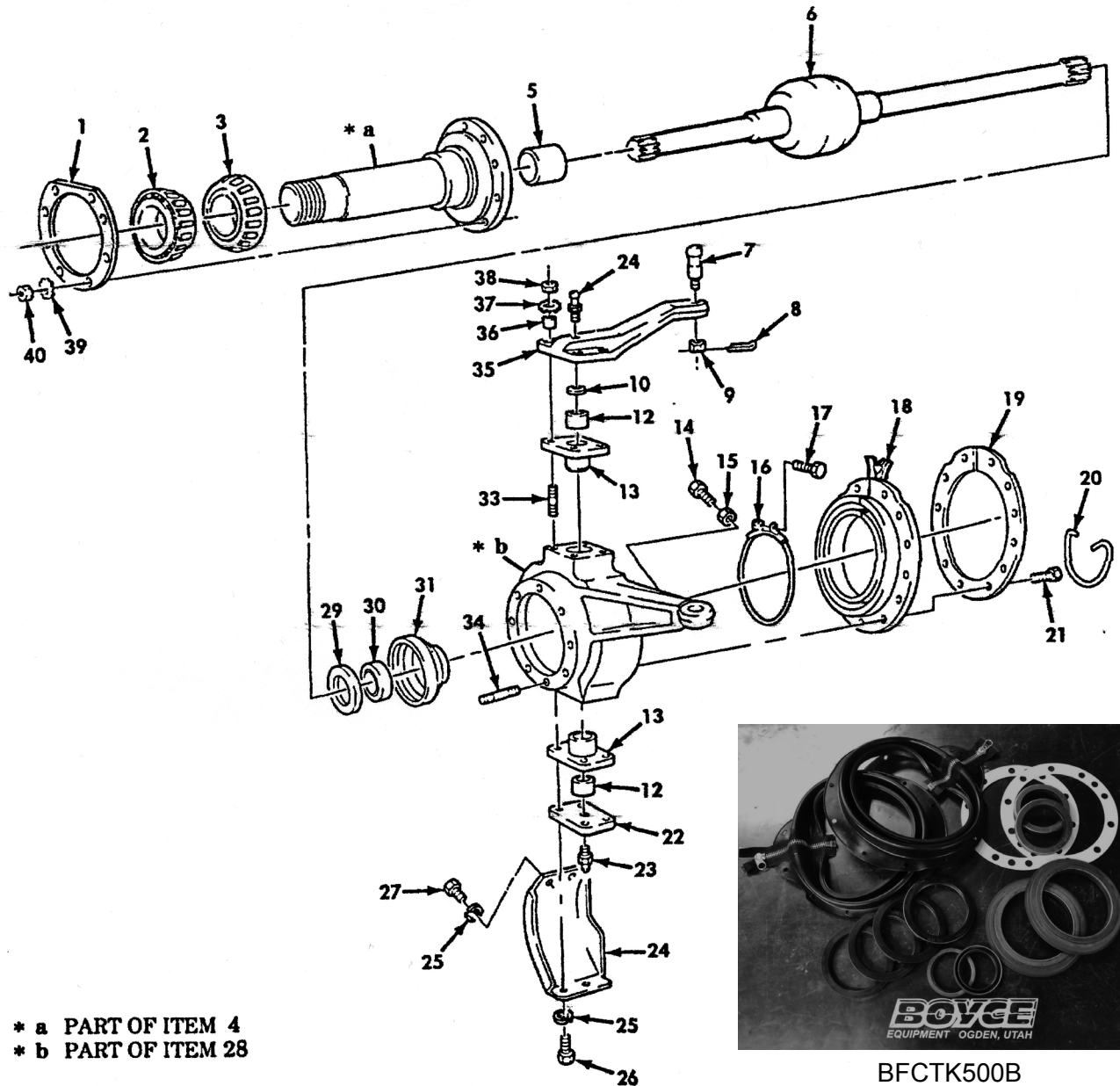
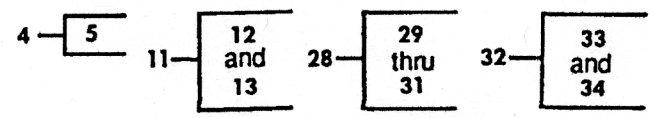
BHK500B



5 Ton 900 Series Front Axle (CTIS) M923A2

FIG	ITEM	BOYCE #	MILITARY #
1	SEAL	CFA500A	3286-N-1054
2	CONE/BEARING	CFA500B	
3	CONE/BEARING	CFA500C	
4	SPINDLE	CFA500D	7346982
5	BUSHING/BEARING	FA500WW	7346983
6	AXLE SHAFT (LONG)	CFA500F	811E1139
6	AXLE SHAFT (SHORT)	CFA500G	J950112-6
7	BALL STUD	CFA500H	11664599
8	COTTER PIN	CFA500J	MS24665-357
9	NUT	CFA500K	MS35692-69
10	WASHER/SPACER	CFA500L	8758282
11	SLEEVE ASSY	FA500Q	8758253
12	BUSHING/BEARING	FA500Y	7346972
13	SLEEVE	CFA500P	8758253
14	BOLT	CFA500Q	5225875
15	NUT	CFA500R	MSS1967-18
16	CLAMP	CFA500S	12300575
17	SCREW	CFA500T	7071098
18	KNUCKLE BOOT (NZ)	FA500EE	7346994/98883R91
18	KNUCKLE BOOT (Z)	FA500EZ	7346994/98883R91
19	RING	FA500DD	7346975
20	WIRE	CFA500W	22-W-1642-100-40
21	SCREW	CFA500X	MS35265-94
22	ACCESS COVER PLATE	FA500LL	7346974
23	FITTING	FA500V	MS15003-1
24	KNUCKLE GUARD	FA500KK	7346977
25	LOCK WASHER	CFA500BB	23MS35338-50
26	SCREW	CFA500CC	B1821BH063C225N
27	SCREW	CFA500DD	B1821BH063C125N
28	SEAL ASSY	CFA500EE	A1244J556
29	THRUST WASHER	FA500QQ	7346986
30	INNER AXLE SEAL	CFA500GG	A1805H60
31	RETAINER	CFA500HH	8758268
32	KNUCKLE R/H	FA500NR	7346816-1
32	KNUCKLE L/H	FA500NL	7346815
33	STUD	FA500P	7346900
34	STUD	CFA500MM	SN-925-1C
35	STEERING ARM	CFA500NN	11664598
36	BUSHING	FA500S	7346812
37	LOCK WASHER	CFA500QQ	MS35335-39
38	NUT	FA500U	7346813
39	LOCK WASHER	CFA500SS	MS35335-38
40	NUT	CFA500TT	MSS1968-17

BOYCE



* a PART OF ITEM 4
 * b PART OF ITEM 28



BFCTK500B

BFCTK500B - 5 TON CTIS FRONT AXLE TUNE-UP KIT

2 EACH	FA500EE	KNUCKLE BOOT
2 EACH	CFH500G	INNER HUB BEARING
2 EACH	CFA500GG	OUTER AXLE SEAL
2 EACH	DP500E	PINION SEAL
4 EACH	CFH500R	AIR SEAL
2 EACH	FA500D	FLANGE GASKET



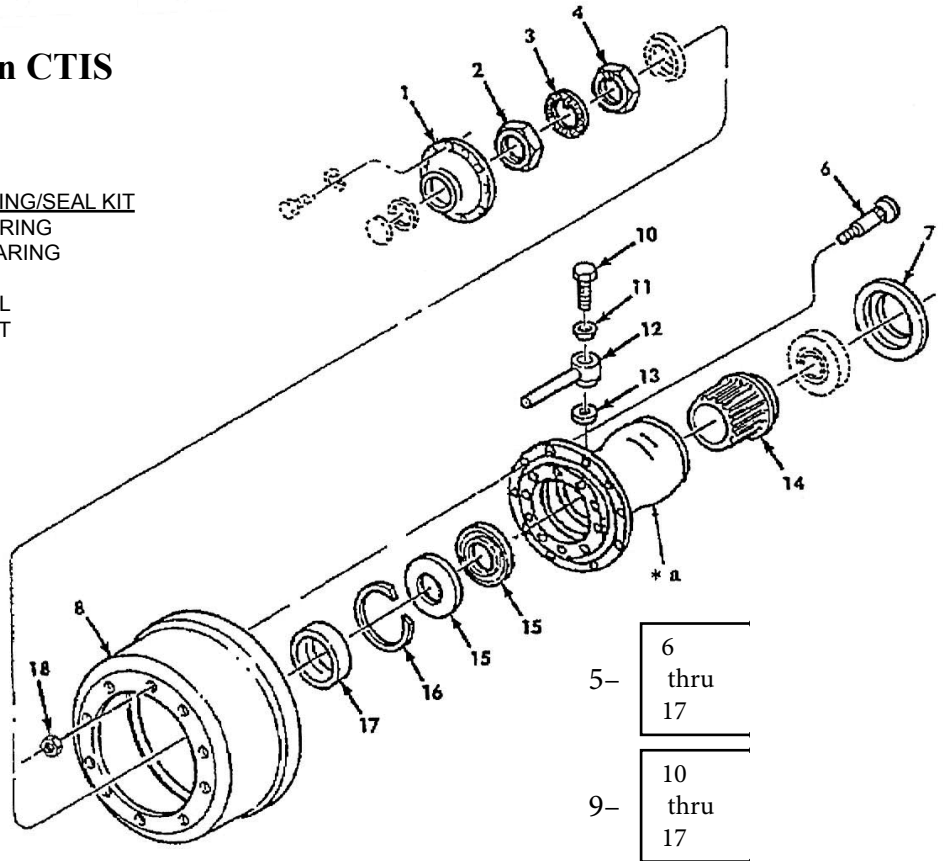
5 Ton Front Hub Breakdown CTIS

BCHK500A - 5 TON CTIS FRONT AXLE BEARING/SEAL KIT

1 EACH	CFA500C	INNER HUB BEARING
1 EACH	CFA500B	OUTER HUB BEARING
2 EACH	CFH500T	HUB RACE
1 EACH	CFH500G	INNER HUB SEAL
1 EACH	FA500D	FLANGE GASKET
		PER HUB



BCHK500A



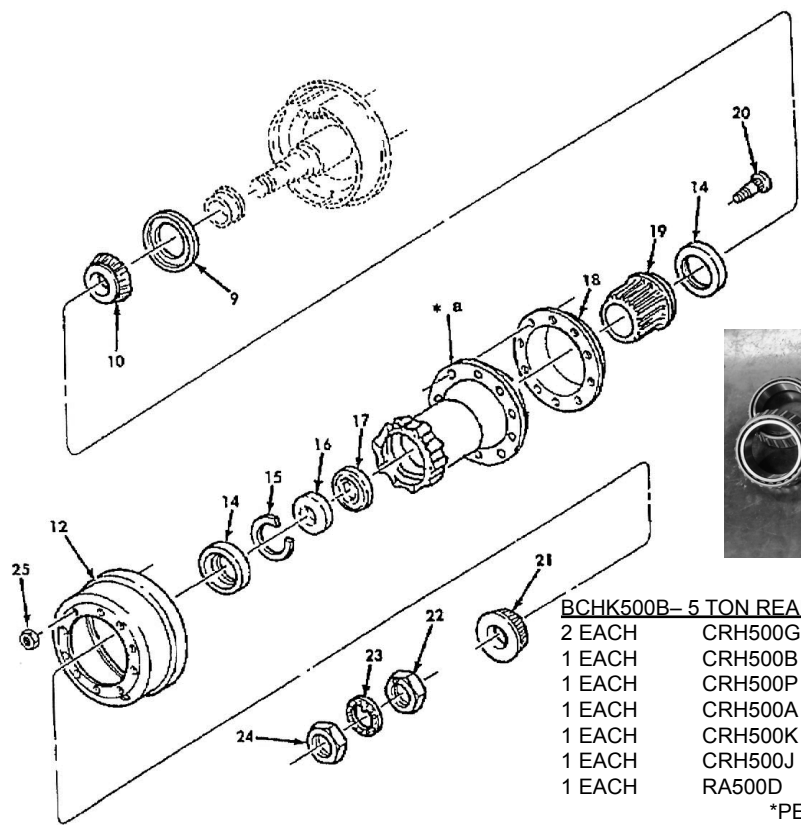
5-	6 thru 17
9-	10 thru 17

FIG	ITEM	BOYCE #	MILITARY #
1	DRIVE FLANGE	CFH500A	A-3270-R-1032
2	SPINDLE NUT	CFH500B	1227-E-1357
3	WASHER	CFH500C	1229-U-1009
4	SPINDLE NUT	CFH500D	1227-D-1356
5	BRAKE DRUM ASSY	CFH500E	A2-333-X-3534
6	WHEEL STUD (LH)	CFH500FL	20X-1815-Z
6	WHEEL STUD (RH)	CFH500FR	20X-1816-Z
7	INNER HUB SEAL	CFH500G	A-1205-Z-2132/4591SCR
8	BRAKE DRUM	CFH500H	3219-E-4815
9	WHEEL HUB ASSY	CFH500J	A3-333-X-3534
*A	WHEEL HUB	CFH500K	A1-333-X-3534
10	SCREW	CFH500L	2206-W-1011
11	SEAL	CFH500M	2297-N-5630
12	TUBE TEE	CFH500N	A-2206-V-1010
13	GASKET	CFH500P	2208-S-1033
14	SLEEVE BUSHING	CFH500Q	2245-H-1022
15	AIR SEAL	CFH500R	A-1205-N-2120
16	RETAINING RING	CFH500S	1229-A-3095
17	RACE	CFH500T	
18	LUG NUT (RH)	CFH500UR	3A7313
18	LUG NUT (LH)	CFH500UL	1199G111



5 Ton Rear Hub Breakdown CTIS

- 11- 12 thru 21
- 13- 14 thru 19



BCHK500B- 5 TON REAR AXLE BEARING/SEAL KIT

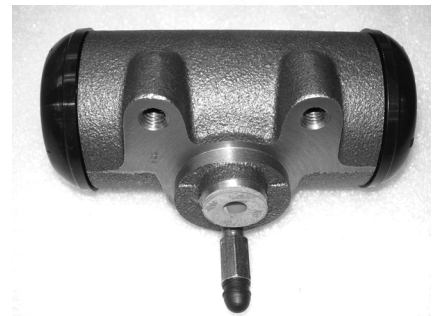
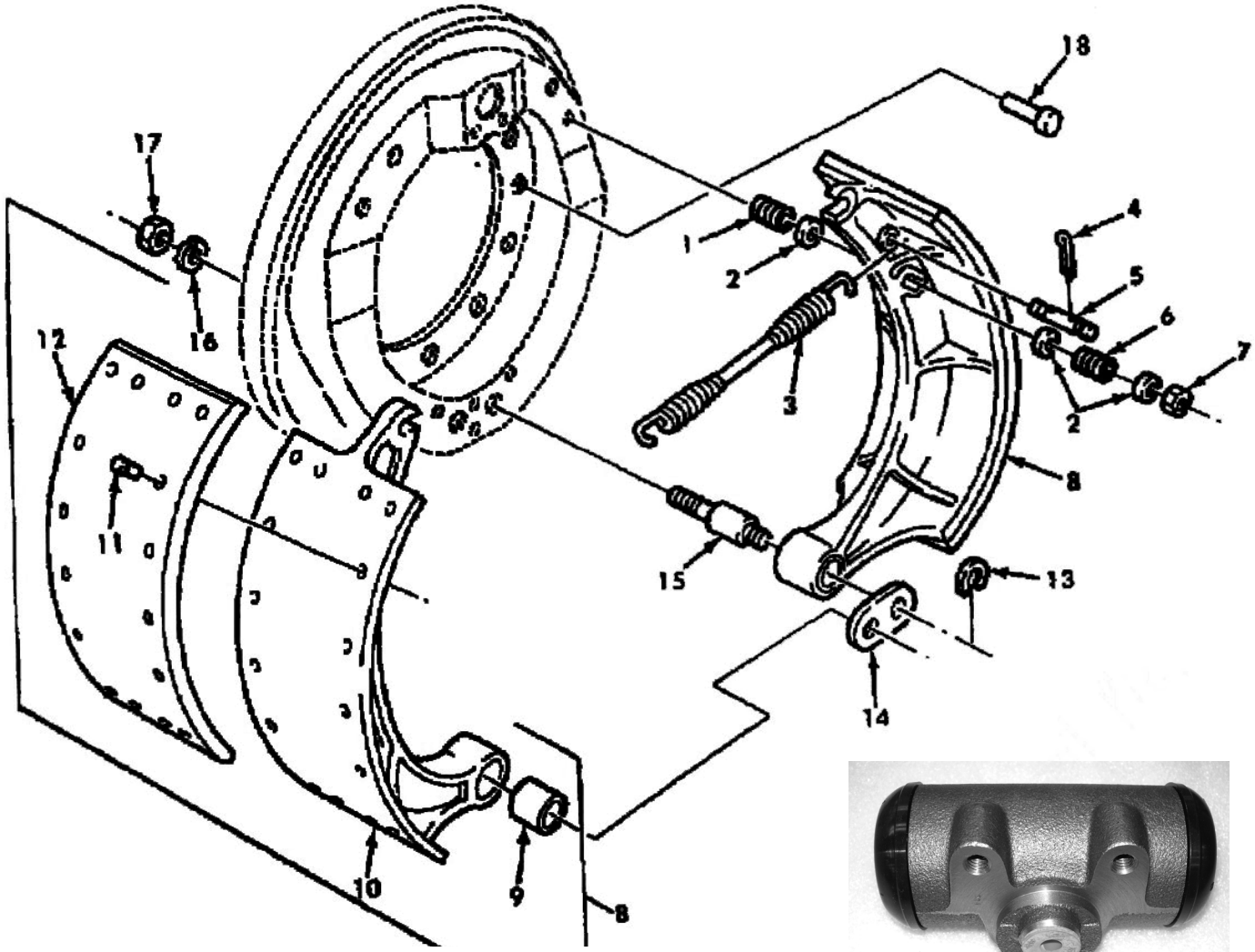
2 EACH	CRH500G	HUB RACE
1 EACH	CRH500B	INNER HUB BEARING
1 EACH	CRH500P	OUTER HUB BEARING
1 EACH	CRH500A	INNER HUB SEAL
1 EACH	CRH500K	AIR SEAL
1 EACH	CRH500J	AIR/OIL SEAL
1 EACH	RA500D	FLANGE GASKET

PER HUB

FIG	ITEM	BOYCE #	MILITARY #
9	INNER HUB SEAL	CRH500A	A-1205-Z-2132/4591SCR
10	INNER BEARING	CRH500B	
11	BRAKE DRUM ASSY	CRH500C	A2-333-X-3534
12	BRAKE DRUM	CRH500D	3219-E-4815
13	WHEEL HUB ASSY	CRH500E	A3-333-Z-3536
A*	WHEEL HUB	CRH500F	A1-333-Z-3536
14	RACE	CRH500G	
15	RETAINING RING	CRH500H	1229-A-3095
16	OIL SEAL	CRH500J	A-1205-D-2162
17	AIR SEAL	CRH500K	A-1205-N-2120
18	DEFLECTOR	CRH500L	3286-P-1056
19	SLEEVE BUSHING	CRH500M	2245-H-1022
20	WHEEL STUD (LH)	CRH500NR	20X-1815-Z
20	WHEEL STUD (RH)	CRH500NL	20X-1816-Z
21	OUTER BEARING	CRH500P	
22	SPINDLE NUT	CRH500Q	1227-D-1356
23	WASHER	DRH500R	1229-U-1009
24	SPINDLE NUT	CRH500S	1227-E-1357
25	LUG NUT (RH)	CRH500TR	3A7313
25	LUG NUT (LH)	CRH500TL	1199G111

BOYCE

5 Ton Brakes (M54, 800 Series)



5 Ton Rear 1 3/4" Wheel Cylinder
(Boyce Part #: RMWC500)



5 Ton Front 1 3/4" Wheel Cylinder
(Boyce Part #: FMWC500)

FIG	ITEM	BOYCE #	MILITARY #
1	SPRING	B500A	11663025
2	WASHER	B500B	11663232
3	SPRING	B500C	7979339
4	COTTER PIN	B500D	MS24665-283
5	PIN	B500E	7979330
6	SPRING	B500F	11663233
7	NUT	B500G	11663236
8	BRAKE SHOE ASSY	B500H	5705700
9	SLEEVE BUSHING	B500J	7979280
10	BRAKE SHOE	B500K	8758318
11	RIVET	B500L	10896748
12	LINING	B500M	11662833
13	WASHER	B500N	7979332
14	ANCHOR	B500P	7979340
15	PIN	B500Q	1759ES
16	WASHER	B500R	MS35338-51
17	NUT	B500S	7207919
18	RIVET	B500T	7979351

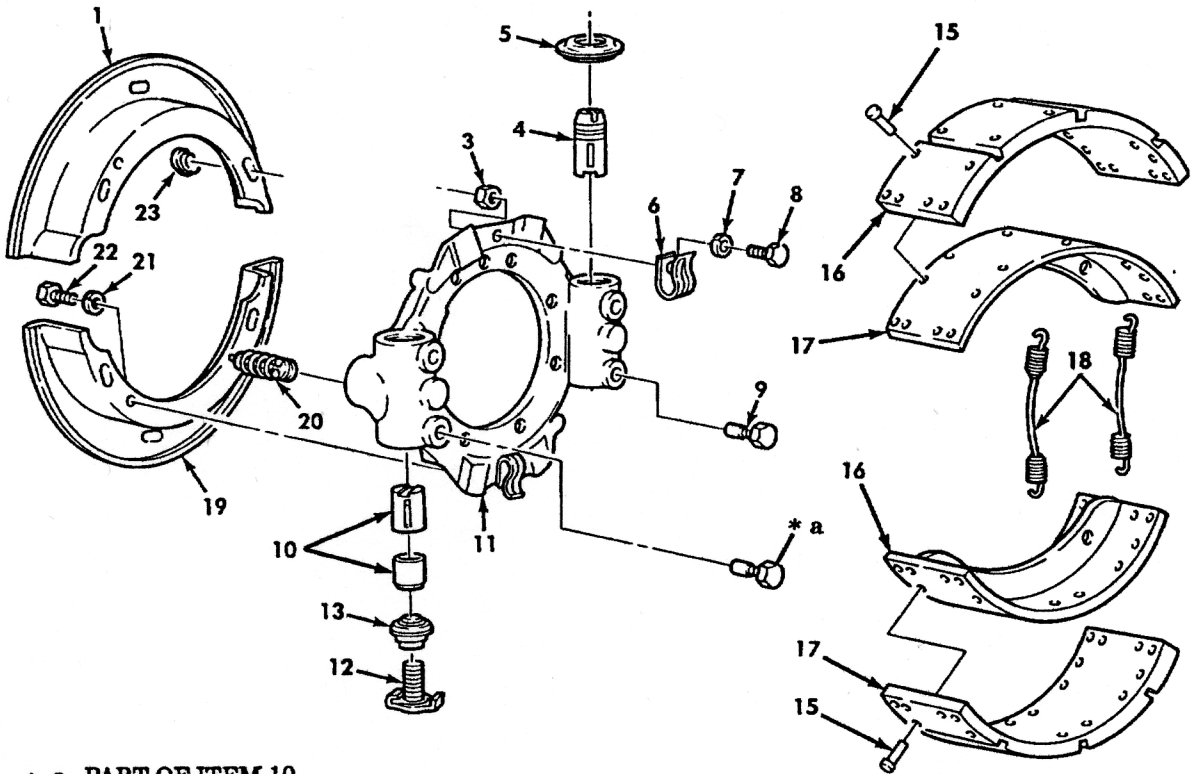


5 Ton 900 Series Brakes

FIG	ITEM	BOYCE #	MILITARY #
1	DUST SHIELD	CB500A	3236-J2012
2	L/H BRAKE SPIDER (3-13)	CB500B	A-3211-H2868
2	R/H BRAKE SPIDER (3-13)	CB500B	A-3211-L-2872
3	NUT	CB500C	MS51968-2
4	L/H HYDRAULIC PISTON	BC500D	2297-K-3855
4	R/H ANCHOR PLUNGER	CB500D	2297-L-3886
5	SEAL	CB500E	1205-B-2004
6	CLIP	CB500F	1718-D-134
7	LOCK WASHER	CB500G	WA-14-C
8	BOLT	CB500H	S-146-C
9	ANCHOR GUIDE	CB500I	A-3280-Z-8190
10	PAWL	CB500J	A-3280-V-8186
11	L/H SPIDER	CB500K	3211-H-2868
11	R/H SPIDER	CB500L	3211-L-2872
12	ADJUSTING SCREW	CB500M	A-2297-V-5326
13	SEAL	CB500N	1205-C-2005
14	PARTS KIT (15-17)	CB500P	5705696
15	RIVET	CB500Q	MS16536-243
16	LINING	CB500R	12356896
17	SHOE	CB500S	12356897
18	SPRING	CB500T	2758-W-127
19	DUST SHIELD	CB500U	3236-K-2013
20	WEDGE ASSY	CB500V	A-2747-H-112
21	LOCK WAHER	CB500W	1229-S-513-C
22	SCREW	CB500X	S255Z
23	CAP PLUG	CB500Y	1707-C-3

BOYCE

2 — 3 thru 13 14 — 15 thru 17



* a PART OF ITEM 10

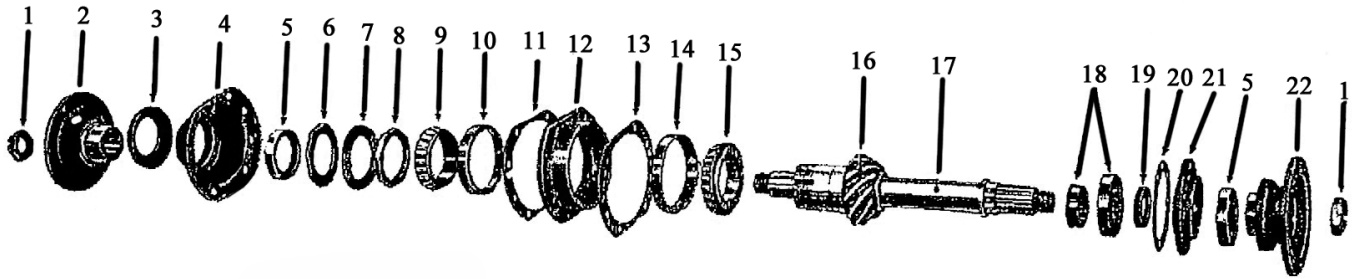


5 Ton Differential Assy

FIG	ITEM	BOYCE #	MILITARY #
1	NUT	DP500A	7346893
2	FLANGE	DP500B	TD-3280G1957
3	SLINGER	DP500C	TD-2847Z312
4	COVER ASSY	DP500D	7346897
5	PINION SEAL	DP500E	500177
6	NUT	DP500F	7346885
7	WASHER	DP500G	7007089
8	NUT	DP500H	7346884
9	BEARING	DP500J	712164
10	RACE	DP500K	706668
11	GASKET	DP500L	7346886
12	CAGE ASSY	DP500M	7346887
13	SHIM	DP500N	7346888
14	RACE	DP500P	706891
15	BEARING	DP500Q	42350
16	PINION	DP500R	TD-3890P354
17	SHAFT	DP500S	7346892
18	BEARING	DP500T	712148
19	SPACER	DP500U	7346894
20	GASKET	DP500V	7346896
21	COVER ASSY	DP500W	7346895
22	FLANGE ASSY	DP500X	7346802

FIG	ITEM	BOYCE #	MILITARY #	FIG	ITEM	BOYCE #	MILITARY #
23	GEAR	D500A	TD-3889L272	39	NUT	D500AA	706687
24	SLEEVE	D500B	7346883	40	CUP/RACE	D500BB	706687
25	BEARING	D500C	707640	41	CONE/BEARING	D500CC	705151
26	SPACER	D500D	7346882	42	CASE	D500DD	TD-3835J296
27	PINION	D500E	7346825	43	WASHER	D500EE	TD-1229H1022
28	SHIM	D500F	7346880	44	GEAR	D500FF	TD-2234H190
29	CAGE ASSY	D500G	7346876	45	SPIDER	D500GG	TD-3278F84
30	CUP/RACE	D500H	706930	46	NUT	D500HH	7346823
31	CONE/BEARING	D500J	705550	47	PINION ASSY	D500JJ	TD-A2233J114
32	WASHER	D500K	7535063	48	BEARING	D500KK	TD-1225S305
33	SHIM	D500L	7346880	49	WASHER	D500LL	TD-1229Q1031
34	COVER	D500M	TD-3866F552	50	GEAR	D500MM	7346824
35	NUT	D500N	121965	51	BOLT	D500NN	7346822
36	WASHER	D500P	120384				
37	SCREW	D500Q	7001668				
38	KEY	D500R	7534781				

BOYCE

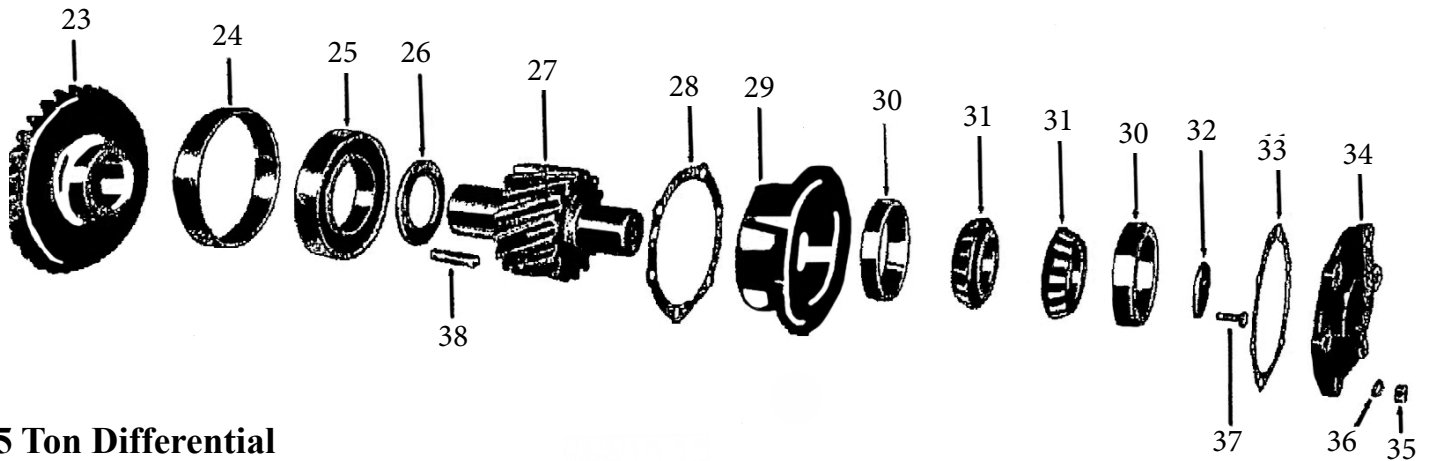


BPK500R – 5 TON PINION BEARING/SEAL KIT

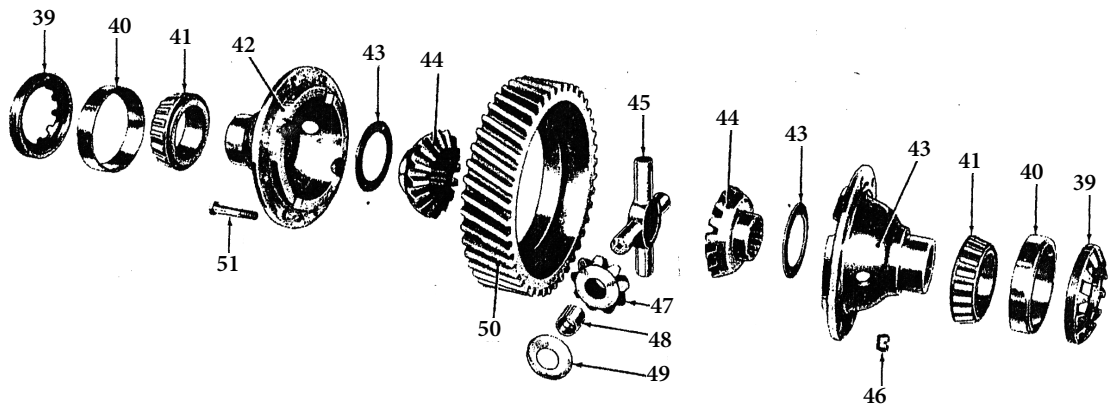
1 EACH	DP500J	BEARING
1 EACH	DP500K	RACE
1 EACH	DP500Q	BEARING
1 EACH	DP500P	RACE
1 EACH	DP500T	BEARING
2 EACH	DP500E	PINION SEAL
1 EACH	DP500L	GASKET

5 Ton Differential Pinion

BPK500R



5 Ton Differential



5 Ton Differential



ORDERING, SHIPPING AND RETURN INSTRUCTIONS

1. TELEPHONE ORDERS

- a. You can place an order for immediate shipment by calling 1-800-748-4269 Collect. Phone Orders must be paid by MasterCard, Visa, Discover or American Express. C.O.D. orders will be accepted for amounts totaling less than \$300 and that can be shipped U.P.S. NO truck line shipments are sent C.O.D.
- b. If you wish to wire your funds, please note information:

For Further Credit To: First National Bank of Layton
12 South Main
Layton, Utah 84041
(801) 544-4241

International Wire
ZFNBUS55
Zions First National Bank

ABA #124300754
On Line with Fed Wire
Send Wire Type 10

Final Credit To: Boyce
Equipment & Parts Co. Inc.
Acct. #01205020 01

2. MAIL ORDERS

- a. If available, please use Boyce order form, carefully filling in all requested information. If you do not have an order form, clearly print your name, address, a phone number at which you can be reached during business hours (8:00 a.m. – 5:00 p.m. Mountain Time), and your home phone number. (Please use physical address; U.P.S. will not deliver to a P.O. Box).
- b. Show make, model and year of vehicle.
- c. Show part number and description of part(s) you're ordering.
- d. When necessary, make sure to include color desired.
- e. There is no sales tax on orders being shipped outside Utah. Residents of Utah must include sales tax.
- f. If you pay for your order via bank check, money order or credit card, it will be shipped within 2–4 weeks (un less item is out of stock.) Orders paid by personal check are held for two (2) weeks to let check clear your bank.
- g. If you have questions that require written answers, please include a stamped, self addressed envelope.

3. SHIPPING

- a. To keep prices low, and in fairness to everyone, shipping charges are not included in the price of an item. You must pay shipping on U.P.S., truck, air freight and parcel post shipments. U.P.S. charges are automatically added to credit card sales slips on charge orders. Charges will be included in C.O.D. shipments. Orders received by mail, paid by check or money order, in which shipping charges have not been included, will be sent shipping charges collect. All truck shipments are sent freight collect with payment going to the trucking company.
- b. Unless notified otherwise, all shipments are F.O.B. Ogden Utah.
- c. Trucking lines are chosen from experience, with consideration given to transit time and price. You may request a particular freight company. We will do our best to ship accordingly.
- d. **IMPORTANT!!!** All shipments should be carefully inspected at time of delivery, because all freight damage claims must be filed by you to the delivering carrier immediately. (Note: It is much easier to resolve a damage claim if you have the driver's signature on the freight bill noting damages.) Do not refuse freight if damaged- this only wastes time and money. The merchandise leaves our warehouse in excellent condition; therefore, Boyce accepts NO responsibility on damaged freight.
- e. To keep your costs down, we ship our parts under special classifications that provide low rates.
- f. APO/FPO address, complete payment is mandatory. On items that cannot be sent parcel post, an actual physical address is necessary. Credit card orders cannot be sent to APO/FPO addresses.
- g. Over 90% of our merchandise is in stock at all times. However, if an item is back-ordered, you will be notified at once with the approximate shipping date.

4. RETURNS

- a. Authorization must be obtained prior to returning any merchandise. A Return Goods Invoice (RGI) number will be given to you upon approval. This number must appear clearly on the outside of the package you are returning.
- b. Merchandise being returned must come back freight prepaid, in original package, and with a copy of the original invoice.

PLEASE NOTE:

If this procedure is not followed, **NO** credit, **NO** refund, **NO** exchange will be allowed.
All returns must be made within 30 days of purchase date.